



15TH ANNUAL CHAROLAIS & ANGUS BULL SALE



Friday 14th August 2020 at 1pm
"Wakefield", Wollomombi, NSW



*Sale interfaced with
Elite Livestock Auctions*

www.wakefieldcharolais.com.au



LOT 3
Wakefield Quicksand
BIS Q219E



LOT 28
Wakefield Quattro
BIS Q201E



15TH ANNUAL CHAROLAIS & ANGUS BULL SALE

Friday 14th August 2020 at 1pm
"Wakefield", Wollomombi, NSW

Approximately 55km east of Armidale on the Waterfall Way
141km south west of Grafton 35km west of Ebor



42 CHAROLAIS BULLS
23 ANGUS BULLS



CONTACT US:

Greg & Jenny Frizell

"Wakefield" Wollomombi via Armidale
phone 02 6778 1346 mobile 0427 781 346
email wakefieldstud@bigpond.com
website www.wakefieldcharolais.com.au



Sale Interfaced via Elite Livestock Auctions

Visit the website for more information:
<https://elitelivestockauctions.com.au/>

SELLING AGENTS:

RAY DONOVAN
STOCK & STATION AGENT

Ray Donovan Stock & Station

Contact Mitch Donovan
phone 0428 470 132
office 02 6643 4411

ARMITAGE & BUCKLEY

Armitage & Buckley

Contact Luke Heagney
phone 0459 044 447
office 02 6772 1255

We are pleased to welcome you to the Fifteenth Annual Wakefield Sale.

What a difference a year can make! After the driest year on record for 2019, this year has started very well and we have gone into winter in the best shape since 2011. We are amazed at how the paddocks have responded to the rain and while initially there was a flush of summer grasses it seems many of the pasture species are coming through underneath. While some of the "sacrifice" feeding paddocks will need replanting the majority of the paddocks will rejuvenate with careful management.

While it has been an extremely costly exercise to feed our cows through we have a full quota of breeding females joined albeit with more heifer joinings than normal. I think we echo most producers' sentiment in saying that we don't want to see a repeat of 2019 again! On the positive side it has been an outstanding opportunity to improve the quality of our breeding herd as culling criteria has been very harsh and the cows left have passed careful scrutiny and will be at least one good outcome from a difficult situation.

It was with some trepidation that preg testing was undertaken this year but we were ecstatic with a 96% pregnancy rate mostly due to a palm kernel/ barley and vetch hay mix fed heavily over the joining period. While the autumn calving cows were weaned earlier than normal to get them back in calf, the spring calvers reared their calves through until April and achieved great pregnancy rates and weaned a tremendous batch of calves.

Many of our clients have suffered severe damage and losses from the fires which raged across Eastern Australia from September onwards. Our heartfelt sympathy goes out to all those who were affected. It is going to take a long time to replace the fencing and infrastructure lost, in some cases there were also considerable stock losses. We escaped without damage but had fires approaching from three sides and it was a very nervous time.

Another issue has been the declaration of koala habitat areas with restrictions on land usage and clearing in these areas. This was done very suddenly and imposed on locations, many of which have had no koala sightings for a very long time, if at all. This is another case of farms being managed by bureaucrats from a city office, playing on public sentiment, to push their own agendas.

While there are still areas of NSW and Queensland who are experiencing dry conditions, the majority of regions have had a good start to 2020 and with an outlook of neutral or above average rainfall the cattle market has certainly responded. This has been driven by restocker demand and some of the saleyard prices for young cattle are outstanding.

This has been a double edged sword, on one hand the operations looking to restock after the drought are finding it difficult to re-enter the market at sustainable levels yet the operations who fed through with minimal destocking, but large fodder costs, are reaping the rewards of higher prices. The high cattle price is not being underpinned by export or domestic demand which is a concern but this is mostly due to Covid related trade issues and will hopefully resolve over time.

With historically very low cattle numbers in Australia, in particular breeding females, it is going to take a long time to breed the National herd back to usual levels and there should be strong restocker demand for the foreseeable future. Certainly there is concern amongst processors and feedlotters about availability of cattle in the spring and it will be interesting to see what happens.

On the family front Chris and Lucy have purchased a farm at Dorrigo as part of their Good Life Beef project and have turned it into another farm stay business as well. One good thing to come out of the overseas and interstate travel restrictions is that bookings from domestic travellers have skyrocketed. Lucy is spending most of her time travelling between farm stays cleaning and welcoming guests. Chris continues to work at Grazag and help Lucy on the weekends – he is a busy boy!

Our youngest daughter Claire has been working in a mixed practice in the Guernsey Islands UK since the start of the New Year and has thankfully picked a spot that is free from Covid. She is learning a lot but working long hours and has had her travel plans reined in by restrictions, so managing to save some money. Jen and Lucy had planned a trip to see her but this has had to be postponed for the time being. We are very grateful to our family for everything they do for us and proud that they see a future in agriculture.

Over the last 12 months, once again, there have been many outstanding results in feedlots, sales, abattoirs and stud bull auctions from stock sired by Wakefield bulls. The overwhelming comments have been how well the bulls are performing under tough conditions, their longevity, and the market suitability of their progeny. We would like to thank our bull buyers for their loyalty and it is reassuring to see their dedication being repaid with the strength of the cattle market.

The Wakefield bull breeding program is tailored to produce calves which will fit the specifications of a wide range of markets and remember we are a commercial operation as well and have a good understanding of what is required. We appreciate feedback from our clients on how our bulls are performing as it helps us to make more informed breeding decisions.

Once again, 2020 will see a large percentage of our purebred calves born by AI and embryo transfer with the emphasis on breeding tough cattle that are at the top of the breed for dollars earned. The bulls this year have been prepared on planted rye grass paddocks with very limited grain assistance in the last month. They will present in a forward but not fat condition in some cases at slightly lower weights than usual as we will not compromise by heavily grain feeding our bulls.

We are not one of the breeders whose bulls are the best you will ever see them on sale day! We think this is critical to the longevity of the bull and his ability to hold condition under tougher conditions. Quite a few of our bulls are jumped directly off the truck straight into client's cow herds!

We look forward to seeing you on Friday the 14th of August at our "all weather" sale complex. Complimentary lunch will be available prior to the sale, which commences at 1pm. Remember if you would like any more information we are only a phone call away and on the day, pack a jumper and bring your catalogue!



The Frizell Family

STUD HISTORY

This year we celebrate 160 years of continuous cattle breeding as Wakefield has been held in the same family since 1860.

Wakefield began breeding Charolais in 1970 when the breed was first introduced into Australia and used most of the early French bulls in grading up programs until currently a herd of 600 Charolais, Charolais composite and Angus females are maintained.

Through the years there have been selected introductions of stud Charolais females, purchase of embryos, regular artificial insemination and embryo transfer programs.

We have been breeding Angus for our composite program for many years and made the decision to join our grandparent lines to Angus to produce purebred. In combination with upgrading these cows to APR status and introduction of industry leading embryos the Angus herd is growing rapidly.

Our emphasis is to produce bulls to increase profit in our client's herds and the calves born over the next few years will be sired by a smaller number of select sires. We think that Canadian, French and Australian Charolais sires provide the balance of growth and carcass characteristics we require. Angus sires are being sourced from the US and Australia.

Wakefield was amongst the pioneers in the use of Charolais Composite bulls and it is pleasing to see Charolais being recognised as the "breed of choice" in crossbreeding programs.

We have decided to concentrate more on our purebred lines as they seem to provide more uniformity in their progeny and keep breeding programs simpler for our clients.

A lot of herds have used composite bulls as a stepping stone into the Charolais breed and have quickly realised the financial benefits of crossbreeding.

Our aim is to breed moderate birth weight Charolais while maintaining good growth and carcass characteristics. Wakefield is a Group Breedplan member so EBVs are available on all purebred bulls and our herd is based around selecting for commercially important traits, such as yield which will become increasingly important under new payment systems.

We are bull breeders not bull feeders. Structural correctness is very important to us and we like to have feedback from our clients to make sure the bulls are performing well under all conditions.

We are proud of our sale bulls and can recommend them to you as herd improver. They can be purchased in the knowledge that they will perform well under commercial conditions and are fully guaranteed.

SALE INFORMATION



REFRESHMENTS

Complimentary lunch and refreshments will be provided by Wakefield.

INSPECTION

Inspection can be made prior to sale day by appointment with the agents or the vendors. Bulls will be available for inspection on sale day from 10am.

COVID-19

Please follow directions and safety signs on sale day in regards to COVID-19. The sale will be operated under the current guidelines at the time of sale. All guests will be required to sign in on arrival and adhere to current social distancing rules. Please be responsible and respectful of others and their health and safety, and do not attend if you are unwell.

Online bidding and over the phone bidding are available and private inspections are welcomed and encouraged at any time prior to the sale.

GUARANTEE

In the unlikely event of infertility, provided it is not caused by injury, stress or disease contracted post sale, we will endeavour to supply a satisfactory replacement if available or issue a credit to equal the purchase price minus the salvage value to be used at future Wakefield sales. The purchaser will provide a veterinarian's certificate within six months of the purchase date.

TRANSPORT

Carriers will be attendance at the sale. We take a keen interest in arranging the most favourable transport for your purchases. This year we are offering free freight from Wakefield to Grafton, Casino, Walcha, Armidale and Kempsey saleyards, with the carrier of our choice. Delivery arrangements are to be made in writing on the buyers instruction form provided in the back of this catalogue.

STUD TRANSFERS

All registered animals are eligible for transfer. For transfer of animals purchasers must be members of the relevant breed society.

REBATE

2% rebate available to outside agents accompanying potential purchasers and settling for purchases within 7 days of receipt of invoice.

TREATMENT SCHEDULE BULLS

- 27/6/2020

Fasinex oral
Pour on Cydectin
Multimin injection
8 in 1 booster (booster required yearly)
Lepto vaccination
Pestivirus vaccination
Vibriosis vaccination (booster required yearly)
Three-day sickness vaccination

- 30/7/2020

Lepto booster (booster required yearly)
Pestivirus booster (booster required yearly)
Three-day sickness booster (booster required yearly)

QUALITY CONTROL

Pestivirus tested negative (hair sample)
Semen tested
Johnes Status – JBAS 7
EU Accredited herd
Angus bulls AM, NH, CA and DD status

NOTICE TO BUYERS

All lots will be sold subject to the usual terms and conditions governing auction sales.

Phone service is available at sale complex. Please contact the vendors or your preferred agent on sale day to arrange phone hook-up. **This year's sale is also interfaced with Elite Livestock Auctions.**

CARING FOR YOUR BULL

This year's sale bulls range from 16 - 32 months of age and will need to be managed accordingly.

There are many advantages in buying younger bulls. You see the bull closer to the weights you are likely to be marketing your cattle at. You will get an extra year of use from your bull and most importantly you are getting the 'pick of the crop'. In our experience the best bulls will be good at all stages of growth and not only when they are mature. You can be confident that a young bull with eye appeal will only get better!

But younger bulls are still growing quickly and need enough feed to maintain their growth pattern while settling your cows. Younger bulls can be introduced into paddocks with older bulls but remember he will be on the bottom of the pecking order and will need room to avoid the others. His nutritional requirements will be greater than a mature bull so make sure he has adequate feed.

Our bulls are used to running in a mob and will arrive in a strange environment at the purchaser's property. Unload him and if possible make sure he has a steer or cow as a companion straight away. Our cattle are mustered on motorbikes and are handled gently but firmly. They may need to be introduced to horses. The bulls have been trained to respect electric fencing.

HOW TO REGISTER with ELITE LIVESTOCK AUCTIONS

Welcome to the new age of selling livestock in
Australia and "Happy Bidding"



-  1 Simply go to **www.elitelivestockauctions.com.au** using your desktop, laptop, iPad, iPhone or android device
-  2 Click on the "Sign Up" page / link
-  3 Create a bidding profile using the bidder registration page.
(You can either register as a livestock agent, company or private buyer.)
-  4 Agree to the Elite Livestock Auctions Terms & Conditions and the Selling Agents Sale Terms & Conditions as printed in the official Sale Catalogue
-  5 Click "Register"
-  6 You will then be notified by email that an account has been created

-  7 Once an account has been created you are all "Set to Bid"
-  8 Each auction can then be viewed by clicking "Live Auction" logo on the Elite Livestock Auctions website
-  9 Once you receive email notification that your account has been created please go to the sale you wish to bid at and click "Request to Bid"
-  10 The sale agents will then approve your application to bid and on the sale catalogue you will see "✓ Bid Request Approved"
-  11 On Sale day simply login, click "Enter Auction" on the catalogue page and you can start bidding.
(There is no need for software download)
-  12 At the completion of the auction, invoicing will be carried out as per your registration details by the Selling Agents.

Having trouble registering and logging in?
Contact Elite Livestock Auctions
1300 15 31 35

UNDERSTANDING ESTIMATED BREEDING VALUES (EBVs)

Charolais BREEDPLAN EBV Explanations

An animal's breeding value is its genetic merit, half of which will be passed on to its progeny. While we will never know the exact breeding value, for performance traits it is possible to make good estimates. These estimates are called Estimated Breeding Values (EBVs).

In the calculation of EBVs, the performance of individual animals within a contemporary group is directly compared to the average of other animals in that group. A contemporary group consists of animals of the same sex and age class within a herd, run under the same management conditions and treated equally. Indirect comparisons are made between animals reared in different contemporary groups, through the use of pedigree links between the groups.

EBVs are expressed in the units of measurement for each particular trait. They are shown as +ive or -ive differences between an individual animal's genetics difference and the genetic base to which the animal is compared. For example, a bull with an EBV of +50 kg for 600-Day Weight is estimated to have genetic merit 50 kg above the breed base of 0 kg. Since the breed base is set to an historical benchmark, the average EBVs of animals in each year drop has changed over time as a result of genetic progress within the breed.

The absolute value of any EBV is not critical, but rather the differences in EBVs between animals. Particular animals should be viewed as being "above or below breed average" for a particular trait.

Whilst EBVs provide the best basis for the comparison of the genetic merit of animals reared in different environments and management conditions, they can only be used to compare animals analysed within the same analysis. Consequently, Charolais BREEDPLAN EBVs cannot be validly compared with EBVs for any other breed.

Although EBVs provide an estimate of an animal's genetic merit for a range of production traits, they do not provide information for all of the traits that must be considered during selection of functional animals. In all situations, EBVs should be used in conjunction with visual assessment for other traits of importance (such as structural soundness, temperament, fertility etc). A recommended practice is to firstly select breeding stock based on EBVs and to then select from this group to ensure that the final selections are otherwise acceptable.

EBVs are published for a range of traits covering fertility, calving ease, milking ability, growth, carcase merit and docility. When using EBVs to assist in selection decisions it is important to achieve a balance between the different groups of traits and to place emphasis on those traits that are important to the particular herd, markets and environment. One of the advantages of having a comprehensive range of EBVs is that it is possible to avoid extremes in particular traits and select for animals with balanced overall performance.

Calving Ease EBVs (%) are based on calving difficulty scores, birth weights and gestation length information. More positive EBVs are favourable and indicate easier calving.

- **CE % Direct** = Direct Calving Ease - The EBV for direct calving ease indicates the influence of the sire on calving ease in purebred females calving at two years of age.

- **CE % Daughters** = Daughters' Calving Ease - The EBV for daughters' calving ease indicates how easily that sire's daughters will calve at two years of age.

Gestation Length EBV (days) is an estimate of the time from conception to the birth of the calf and is based on Artificial Insemination and hand mating records. Lower (negative) Gestation Length EBVs indicate shorter gestation length and therefore easier calving and increased growth after birth.

Birth Weight EBV (kg) is based on the measured birth weight of progeny, adjusted for dam age. The lower the value the lighter the calf at birth and the lower the likelihood of a difficult birth. This is particularly important when selecting sires for use over heifers.

200-Day Growth EBV (kg) is calculated from the weight of progeny taken between 80 and 300 days of age. Values are adjusted to 200 days and for age of dam. This EBV is the best single estimate of an animal's genetic merit for growth to early ages.

400-Day Weight EBV (kg) is calculated from the weight of progeny taken between 301 and 500 days of age, adjusted to 400 days and for age of dam. This EBV is the best single estimate of an animal's genetic merit for yearling weight.

600-Day Weight EBV (kg) is calculated from the weight of progeny taken between 501 and 900 days of age, adjusted to 600 days and for age of dam. This EBV is the best single estimate of an animal's genetic merit for growth beyond yearling age.

Mature Cow Weight EBV (kg) is based on the cow weight when the calf is weighed for weaning, adjusted to 5 years of age. This EBV is an estimate of the genetic difference in cow weight at 5 years of age and is an indicator of growth at later ages and potential feed maintenance requirements of the females in the breeding herd. Steer breeders wishing to grow animals out to a larger weight may also use the Mature Cow Weight EBV.

Milk EBV (kg) is an estimate of an animal's milking ability. For sires, this EBV indicates the effect of the daughter's milking ability, inherited from the sire, on the 200-day weights of her calves. For dams, it indicates her milking ability.

Scrotal Size EBV (cm) is calculated from the circumference of the scrotum taken between 300 and 700 days of age and adjusted to 400 days of age. This EBV is an estimate of an animal's genetic merit for scrotal size. There is also a small negative correlation with age of puberty in female progeny and therefore selection for increased scrotal size will result in reduced age at calving of female progeny.

Carcase Weight EBV (kg) is based on abattoir carcase records and is an indicator of the genetic differences in carcase weight at the standard age of 650 days.

UNDERSTANDING ESTIMATED BREEDING VALUES (EBVs)

Eye Muscle Area EBV (sq cm) is calculated from measurements from live animal ultrasound scans and from abattoir carcass data, adjusted to a standard 300 kg carcass. This EBV estimates genetic differences in eye muscle area at the 12/13th rib site of a 300 kg dressed carcass. More positive EBVs indicate better muscling on animals. Sires with relatively higher Eye Muscle Area EBVs are expected to produce better muscled and higher percentage yielding progeny at the same carcass weight than will sires with lower Eye Muscle Area EBVs.

Rib Fat and Rump Fat EBVs (mm) are calculated from measurements of subcutaneous fat depth at the 12/13 rib site and the P8 rump site (from live animal ultrasound scans and from abattoir carcasses) and are adjusted to a standard 300 kg carcass. These EBVs are indicators of the genetic differences in fat distribution on a standard 300 kg carcass. Sires with low, or negative, fat EBVs are expected to produce leaner progeny at any particular carcass weight than will sires with higher EBVs.

Retail Beef Yield EBV (%) indicates genetic differences between animals for retail yield percentage in a standard 300 kg carcass. Sires with larger EBVs are expected to produce progeny with higher yielding carcasses.

Intramuscular Fat EBV (%) is an estimate of the genetic difference in the percentage of intramuscular fat (marbling) at the 12/13th rib site in a 300 kg carcass. Depending on market targets, larger more positive values are generally more favourable.

Selection Indices

Charolais selection indices are calculated for three market specifications, namely, Domestic, Export and Northern Terminal. Index values are reported as EBVs, in units of relative earning capacity (\$'s) for a given market. They reflect both the short-term profit generated by a sire through the sale of his progeny, and the longer-term profit generated by his daughters in a self-replacing cow herd. A selection index combines the EBVs with economic information (costs and returns) for specific market and production systems to rank animals based on relative profit values.

Note that different types of animals can give similar profit values, so consideration should be given to both the index and the component EBVs when selecting animals for a particular production system.

More information is available on selecting animals using a selection index. The Index values are derived using BreedObject technology. More information is available from the BreedObject web site.

Domestic Index (\$) - Estimates the genetic differences between animals in net profitability per cow joined for an example commercial herd with a British cow base (eg Angus) targeting grass-finished production for the domestic trade. This Index assumes pasture grown & finished steers weighing 430 kg (240 kg HSCW and 6 mm P8 fat depth) at 12 months. Daughters are retained or sold for breeding therefore maternal traits are of importance. In response to industry feedback, positive emphasis has been placed on finishing ability.

Export Index (\$) - Estimates the genetic differences between animals in net profitability per cow joined for an example commercial herd with a British cow base (eg Angus) targeting the production of steers for export markets. This Index assumes pasture grown & finished steers weighing 700 kg (380 kg HSCW and 9 mm P8 fat depth) at 29 months. Daughters are retained or sold for breeding therefore maternal traits are of importance. In response to industry feedback, positive emphasis has been placed on finishing ability.

Accuracy

Accuracy (%) is based on the amount of performance information available on the animal and its close relatives - particularly the number of progeny analysed. Accuracy is also based on the heritability of the trait and the genetic correlations with other recorded traits. Hence accuracy indicates the "confidence level" of the EBV. The higher the accuracy value the lower the likelihood of change in the animal's EBV as more information is analysed for that animal or its relatives. Even though an EBV with a low accuracy may change in the future, it is still the best estimate of an animal's genetic merit for that trait. As more information becomes available, an EBV is just as likely to increase in value, as it is to decrease. Accuracy values range from 0-99%. The following guide is given for interpreting accuracy:

- **less than 50%:** Low accuracy. EBVs are preliminary and could change substantially as more performance information becomes available.
- **50-74%:** Medium accuracy. Usually based on the animal's own records and pedigree.
- **75-90%:** Medium-high accuracy. Some progeny information included. EBVs may change with addition of more progeny data.
- **more than 90%:** High accuracy estimate of the animal's true breeding value.

As a rule, animals should be compared on EBVs regardless of accuracy. However, where two animals have similar EBVs the one with higher accuracy could be the safer choice, assuming other factors are equal.

CHAROLAIS Breed Avg. EBVs for 2018 Born Calves																
	CE Dir	CE Dtr	GL	BW	200	400	600	MCW	Milk	SS	CWT	EMA	RIB	Rump	RBY	IMF
EBV	+1.5	+0.8	-2.7	+0.3	+12	+24	+32	+32	+7	+1.1	+20	+1.6	+0.3	+0.3	+0.1	+0.2

Mid July 2020 Angus Australia BREEDPLAN Breed Avg.																
	CE Dir	CE Dtr	GL	BW	200	400	600	MCW	Milk	SS	CWT	EMA	RIB	Rump	RBY	IMF
EBV	+2.2	+2.6	-4.6	+4.2	+49	+88	+115	+100	+17	+2.0	+65	+6.0	-0.1	-0.4	+0.5	+2.1

For further information please contact
The Charolais Society on 02 6771 1666 / Charolais BREEDPLAN on 02 6773 3059.
Angus Australia on 02 6773 4600.

CHAROLAIS REFERENCE SIREs

REFERENCE SIRE: WAKEFIELD MASQUERADE (AI) (ET) (P)

TATTOO: BIS M152E

DOB: 04/04/2016

COLOUR: White

SPARROWS SANCHEZ 715T MC310816 (OAC C816E) (P)
SIRE: CML ENCORE 4Y MC339109 (OAC G9109E) (P)
 CML PLD WILMA 3S PFC365414 (OAC B5414E) (P)
 SILVERSTREAM JONAH J91F 83/FF12682/94 (83 J91F)
DAM: WAKEFIELD ACE (BIS A862E)
 MOUNT WILLIAM V92E (BS V92E)

Index	\$Value
Dom\$	+\$31
Exp\$	+\$44
NTerm\$	+\$16

	June 2020 Australasian Charolais BREEDPLAN Analysis															
	CE Dir	CE Dtr	GL	BW	200	400	600	MCW	Milk	SS	CWT	EMA	RIB	Rump	RBY	IMF
EBV	+5.7	+7.5	-3.2	-0.7	+7	+14	+19	+18	+6	+1.1	+16	+1.5	+1.0	+0.9	-0.2	-0.3
Acc	57%	45%	55%	82%	56%	56%	58%	58%	46%	39%	42%	32%	34%	34%	33%	31%

COMMENTS: Masquerade has been a very successful sire in the Wakefield herd for the last couple of years. He has sons at this sale that are true to type Charolais, full of power with tremendous length of body and great top lines. He is a polled bull by Canadian sire CML Encore out of our original Ace cow that has produced many outstanding animal in the Wakefield herd. His full flush brother was the top priced bull at our 2017 bull sale selling to Vida Montana. Top 5% on calving ease on daughters and top 20% for rib fat.

REFERENCE SIRE: WAKEFIELD MAHARAJAH (AI) (ET) (P)

TATTOO: BIS M179E

DOB: 23/07/2016

COLOUR: White

CHARDEL FALCON 503T MC63913 (OAC -503E)
SIRE: MNE GOLDEN EAGLE 25W PMC 85384 (OAC G25E) (P/S)
 EFH MISS T 10S FC81112 (PED -811E)
 HARVIE JAGER 65J PMC228759 (OAC U8759E) (P)
DAM: GOBONGO REBBY D213E (GO D213E) (P)
 GOBONGO REBBY W100E (GO W100E)

Index	\$Value
Dom\$	+\$24
Exp\$	+\$39
NTerm\$	+\$21

	June 2020 Australasian Charolais BREEDPLAN Analysis															
	CE Dir	CE Dtr	GL	BW	200	400	600	MCW	Milk	SS	CWT	EMA	RIB	Rump	RBY	IMF
EBV	+3.0	+1.5	-1.6	+1.0	+11	+18	+34	+19	+8	+1.9	+12	+0.8	+0.7	+1.3	-0.1	+0.0
Acc	65%	56%	63%	86%	66%	65%	67%	66%	61%	56%	55%	47%	50%	50%	48%	44%

COMMENTS: Maharajah has been used extensively at Wakefield. He has produced lovely soft skinned, soft hair type animals that have good body length and muscle with great temperaments.

REFERENCE SIRE: WAKEFIELD LORAX (AI) (ET) (P) (R/F)

TATTOO: BIS L982E

DOB: 31/08/2015

COLOUR: Red factor

LT BLUEGRASS 4017P M686569 (OAU Z4017E) (P)
SIRE: LT LEDGER 0332 M791626 (OAU F3168E) (P)
 LT BRENDA 6120 PLD F1046992 (PED -6992E)
 AIRLIE CARMELO (A1S C150F)
DAM: AIRLIE FRIESIA G726E (A1S G726E) (P)
 AIRLIE FRIESIA B735E (A1S B735E) (P)

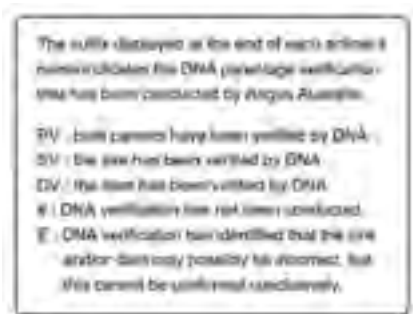
Index	\$Value
Dom\$	+\$42
Exp\$	+\$56
NTerm\$	+\$24

	June 2020 Australasian Charolais BREEDPLAN Analysis															
	CE Dir	CE Dtr	GL	BW	200	400	600	MCW	Milk	SS	CWT	EMA	RIB	Rump	RBY	IMF
EBV	+10.0	-0.2	-3.0	-1.6	+11	+23	+26	+14	+7	+2.4	+18	+1.4	+0.4	+0.8	-0.4	+0.6
Acc	66%	50%	61%	87%	64%	65%	66%	64%	55%	57%	52%	45%	51%	50%	48%	45%

COMMENTS: Lorax is a homozygous red factor by by LT Ledger and a real favourite here at Wakefield. He is a tremendously quiet boy that is giving us thick, meaty bulls and feminine wedge shaped females. His full flush sister is a very stylish, she milks well and is very fertile.

ANGUS REFERENCE SIREs

Angus Society Suffix DNA Key:



REFERENCE SIRE: TE MANIA EMPEROR E343^{PV}

IDENT: VTME343

DOB: 09/08/2009

HERDBOOK: HBR

TE MANIA YORKSHIRE Y437 VTM437^{PV}
SIRE: TE MANIA BERKLEY B1 VTMB1^{SV}
 TE MANIA LOWAN Z53 VTMZ53#
 B T ULTRAVOX 297E USA297E#
DAM: TE MANIA LOWAN Z74 VTMZ74^{PV}
 TE MANIA LOWAN V201 VTMV201#

Index	\$Value
Breeding	\$137
Domestic	\$119
Heavy Grain	\$154
Heavy Grass	\$128

July 2020 TransTasman Angus Cattle Evaluation

	CE Dir	CE Dtr	GL	BW	200	400	600	MCW	Milk	SS	CWT	EMA	RIB	Rump	RBY	IMF
EBV	+4.8	+6.8	-6.7	+5.1	+51	+95	+126	+125	+11	+1.9	+68	+4.2	+2.2	+0.0	-0.7	+2.6
Acc	98%	95%	99%	99%	99%	99%	99%	99%	99%	99%	98%	98%	98%	98%	97%	97%

Genetic Conditions: AMF,CAF,DDF,NHF,MAF,OSF,RGF

COMMENTS: Temania Emperor has been used at Wakefield as he is the number one AI sire in Australia. The progeny have eye appeal and growth with wonderful correct phenotypes and a natural doing ability. The females are breeding well for us and are fertile with good udders and milk.

REFERENCE SIRE: S S NIAGARA Z29^{SV}

IDENT: USA17287387

DOB: 05/01/2012

HERDBOOK: HBR

SYDGEN C C & 7 USA15330743#
SIRE: HOOVER DAM USA16124994#
 ERICA OF ELLSTON C124 USA14851883#
 B/R NEW DAY 454 USA14675445#
DAM: JET S S X144 USA16715036#
 JET S S T151 USA15790012#

Index	\$Value
Breeding	\$145
Domestic	\$136
Heavy Grain	\$154
Heavy Grass	\$142

July 2020 TransTasman Angus Cattle Evaluation

	CE Dir	CE Dtr	GL	BW	200	400	600	MCW	Milk	SS	CWT	EMA	RIB	Rump	RBY	IMF
EBV	+8.1	+2.6	-3.2	+2.5	+59	+113	+144	+121	+21	+1.5	+79	+8.4	-0.8	-2.0	+1.8	+1.7
Acc	71%	56%	96%	93%	90%	89%	91%	84%	79%	85%	82%	78%	80%	75%	75%	77%

Genetic Conditions: AMF,CAF,DDF,NHF,DWF,MHF,OHF,OSF,RGF

COMMENTS: The progeny from SS Niagara are docile and correct while maintaining natural finishing ability. When we talk about beef, this bull is producing plenty of meaty bulls with high retail beef yields. Females are breeding well in our herd and the bulls have wonderful phenotypes with good temperaments.

ANGUS REFERENCE SIREs

REFERENCE SIRE: GRANITE RIDGE KAISER K26^{SV}

IDENT: SJKK26

DOB: 24/03/2014

HERDBOOK: HBR

TE MANIA CALAMUS C46 VTMC46^{SV}
SIRE: TE MANIA FOE F734 VTMF734^{SV}
 TE MANIA DANDLOO D700 VTMD700#
 NICHOLS QUIET LAD T9 USA15922661#
DAM: GRANITE RIDGE SUPREME F158 SJKF158#
 GRANITE RIDGE SUPREME D85 SJKD85#

Index	\$Value
Breeding	\$148
Domestic	\$125
Heavy Grain	\$159
Heavy Grass	\$141

July 2020 TransTasman Angus Cattle Evaluation

	CE Dir	CE Dtr	GL	BW	200	400	600	MCW	Milk	SS	CWT	EMA	RIB	Rump	RBY	IMF
EBV	+6.5	+4.5	-7.3	+5.3	+57	+100	+139	+128	+22	+2.1	+79	+9.3	+0.8	-0.7	+0.7	+1.6
Acc	78%	64%	98%	98%	97%	97%	97%	86%	81%	96%	81%	84%	84%	83%	77%	82%

Genetic Conditions: AMFU,CAFU,DDF,NHFU

COMMENTS: Granite Ridge Kaiser K26 has been used in our herd for his growth, muscle, depth of flank and his lovely docile disposition. His sons are born easily and grow well. The females are feminine, wedge shaped with good udders and milk.

REFERENCE SIRE: DEER VALLEY PATRIOT 3222^{SV}

IDENT: USA17577916

DOB: 04/02/2013

HERDBOOK: HBR

S A V FINAL ANSWER 0035 USA0035#
SIRE: CONNEALY CAPITALIST 028 USA16752262#
 PRIDES PITA OF CONANGA 8821 USA16204878#
 SITZ UPWARD 307R USA14963730^{SV}
DAM: DEER VALLEY RITA 0274 USA16659290#
 G A R OBJECTIVE 2345 USA15129485#

Index	\$Value
Breeding	\$143
Domestic	\$139
Heavy Grain	\$159
Heavy Grass	\$139

July 2020 TransTasman Angus Cattle Evaluation

	CE Dir	CE Dtr	GL	BW	200	400	600	MCW	Milk	SS	CWT	EMA	RIB	Rump	RBY	IMF
EBV	+8.0	+5.5	-5.4	+2.4	+59	+110	+139	+115	+17	+0.4	+77	+8.8	-2.8	-5.0	+2.6	+2.2
Acc	77%	58%	98%	97%	95%	95%	95%	87%	85%	93%	84%	84%	85%	81%	79%	82%

Genetic Conditions: AMF,CAF,DDF,NHF,DWF,MAF,MHF,OHF,OSF,RGF

COMMENTS: Deer Valley Patriot was used at Wakefield for his ease of calving, low birth weight, good neck extension and growth figures. We have been happy with the progeny from this bull and continue to trickle him through our herd.

REFERENCE SIRE: CLUNIE RANGE KALUHA K330^{PV}

IDENT: NBHK330

DOB: 15/07/2014

HERDBOOK: HBR

TUWHARETOA REGENT D145 BNAD145^{PV}
SIRE: MILWILLAH GATSBY G279 NJWG279^{PV}
 MILWILLAH LOWAN D112 NJWD112^{SV}
 TE MANIA EMPEROR E343 VTME343^{PV}
DAM: CLUNIE RANGE PRINCESS H381 NBHH381^{SV}
 CLUNIE RANGE PRINCESS E64 NBHE64#

Index	\$Value
Breeding	\$161
Domestic	\$133
Heavy Grain	\$187
Heavy Grass	\$146

July 2020 TransTasman Angus Cattle Evaluation

	CE Dir	CE Dtr	GL	BW	200	400	600	MCW	Milk	SS	CWT	EMA	RIB	Rump	RBY	IMF
EBV	+2.1	-4.4	-6.6	+5.2	+57	+100	+133	+118	+18	+1.3	+89	+10.2	+1.0	-0.5	+1.1	+3.2
Acc	75%	63%	97%	97%	94%	94%	95%	85%	78%	94%	90%	90%	91%	89%	90%	88%

Genetic Conditions: AMFU,CAFU,DDFU,NHFU

COMMENTS: Clunie Range Kaluha has been used for his growth and power. He is a slick coated bull that is producing calves that are heavy with tremendous top lines on good frames. The progeny are free-moving and are phenotypically correct which makes them easy on the eye.

RAY DONOVAN

STOCK & STATION AGENT

**Are your 100% locally owned family
business in Grafton**

We conduct

- * Fat cattle sales every Tuesday**
- * Store cattle sales third Thursday of every month**
- * Paddock sales, over the hook and direct to feedlot sales**
- * Clearing and general Auction sales**
- * Rural property Real Estate sales**

**Sell with the progressive local team who
strive to keep competition alive,
Offering maximum returns on all your Livestock Sales.**

We know the people, the markets and the country.

**For friendly, competent service and advice,
Contact the team at
50 Armidale Street, South Grafton
02 6643 4411**

**Email: reception@raydonovan.com.au
Website: www.raydonovan.com.au**

AFTER HOURS

**Mitch: 6649 4043 Or 0428 470132
Patrick: 0438 211585 — Real Estate**

1

WAKEFIELD PRIZEFIGHTER (AI)

TATTOO: BIS P787E DOB: 07/04/2018 COLOUR: White

RANGAN PARK REDEMPTION E42 (RAN E42E) (P)
SIRE: WAKEFIELD JACK FLASH (BIS J635E) (P)
 WAKEFIELD ACE (BIS A862E)

IJOUFFLU 6327351004 (OAF N6327F)
DAM: WAKEFIELD AMAZE 9 (BIS E435E)
 WAKEFIELD AMAZE 2 (BIS C129E) (P)

HARVIE REDEMPTION 36P MC286641 (OAC Z6641E)(P)
 RANGAN PARK SHOWGIRL C7 (RAN C7E)
 SILVERSTREAM JONAH J91F 83/FF12682/94 (83 J91F)
 MOUNT WILLIAM V92E (BS V92E)
 DIEGO RR3 1888102991 (PED X2991F)
 GIROLLE 6391101387 (PED -1387F)
 LHD MR PERFECT Y416 M 314744 (OAC J416E) (P)
 WAKEFIELD AMAZE (BIS A820E)

Index	\$Value
Dom\$	-\$1
Exp\$	-\$4
NTerm\$	+\$9



June 2020 Australasian Charolais BREEDPLAN Analysis

	CE Dir	CE Dtr	GL	BW	200	400	600	MCW	Milk	SS	CWT	EMA	RIB	Rump	RBV	IMF
EBV	-7.1	-3.2	+1.4	+1.8	+15	+25	+33	+34	+4	-0.6	+22	+2.2	-0.7	-1.1	+1.2	-0.3
Acc	47%	44%	72%	71%	53%	53%	55%	53%	46%	46%	44%	37%	40%	40%	39%	36%

COMMENTS: Prizefighter starts our sale today and what a bull he is! His dam Wakefield Amaze 9 is an awesome cow at Wakefield, she is a full flush sister to the Amaze 10 cow the dam of the Supreme Exhibit at the Charolais National 2019 Wakefield Amaze 38. Her progeny are correct with great topline and body length. She is extremely fertile with good milk and tremendous longevity. Jack Flash bulls are thick, correct animals on good frames that finish well. We would expect this bull to produce for all beef operations. An ideal herd-improver. Top 10% for RBV and top 20% for EMA.

PURCHASER _____

\$ _____

2

WAKEFIELD PETER PAN (AI) (R/F) (TW)

TATTOO: BIS P958E DOB: 21/12/2018 COLOUR: Red factor

ESPION (IAF E6034F)
SIRE: WAKEFIELD JUMBLE (BIS J526E) (P/S)
 WAKEFIELD BRILLIANT (BIS B958E)

KEYS ALL STATE 149X M792787 (OAU F2787E) (P)
DAM: WAKEFIELD FRIESIA KA (BIS L983E) (P)
 AIRLIE FRIESIA G726E (A1S G726E) (P)

CAVALIER C27 71226 C27 (ZZF C27F)
 SABINE (ZZF X291F)
 EXCLUSIF 8589103317 (OAF J858F)
 MOUNT WILLIAM V92E (BS V92E)
 KEYS SPECIALIST 18U M761126 (OAU -1126E) (P)
 MISS KEY MEG 2T F1079615 (OAU -9615E) (P)
 AIRLIE CARMELO (A1S C150F)
 AIRLIE FRIESIA B735E (A1S B735E) (P)

Index	\$Value
Dom\$	+\$28
Exp\$	+\$39
NTerm\$	+\$21



June 2020 Australasian Charolais BREEDPLAN Analysis

	CE Dir	CE Dtr	GL	BW	200	400	600	MCW	Milk	SS	CWT	EMA	RIB	Rump	RBV	IMF
EBV	+1.8	+4.4	-3.6	+0.7	+12	+26	+34	+27	+1	+1.1	+28	+3.3	+0.0	-0.3	+1.4	-0.5
Acc	40%	33%	45%	55%	44%	46%	48%	43%	35%	47%	38%	33%	36%	35%	34%	32%

COMMENTS: Peter Pan is a red factor, son of Wakefield Jumble, a bull that has eye appeal and a natural doing ability. He has good conformation, a solid topline and good length of body with plenty of thickness and meat. He has positive calving figures so the calves should be born easily. He should suit any cattle operation from vealer to Jap ox! Top 20% for calving ease on daughters and top 15% for carcass weight and top 5% for EMA and RBV.

PURCHASER _____

\$ _____

3

WAKEFIELD QUICKSAND (AI) (ET) (P/S)

TATTOO: BIS Q219E DOB: 10/05/2019 COLOUR: White

BAR J SILVERADO 14S PMC306605 (PED -6605E)

SIRE: JWX SILVER BULLET 524W PMC325757 (OACE5757E)(P)

KMAC MISS MARMALADE 31R PFC343445 (PED -3445E)

IJOUFFLU 6327351004 (OAF N6327F)

DAM: WAKEFIELD AMAZE 10 (BIS E445E)

WAKEFIELD AMAZE 2 (BIS C129E) (P)

ROSSO NEW HORIZON 8L PMC258716 (PED -5716F)

BAR J LOLLYPOP 8L PFC306861 (PED -6861F)

S\$ MONTANA SILVER M454024 (OAU R4024E) (P)

SOS LADY MARMALADE 47L PFC303459 (PED -3459E)

DIEGO RR3 1888102991 (PED X2991F)

GIROLLE 6391101387 (PED -1387F)

LHD MR PERFECT Y416 M 314744 (OAC J416E) (P)

WAKEFIELD AMAZE (BIS A820E)

Index	\$Value
Dom\$	+\$22
Exp\$	+\$30
NTerm\$	+\$19

Expected Average Progeny Value - July 2020																
CE Dir	CE Dtr	GL	BW	200	400	600	MCW	Milk	SS	CWT	EMA	RIB	Rump	RBY	IMF	
EBV	+2.2	+2.5	-3.1	+0.3	+17	+27	+35	+33	+4	+1.5	+24	+1.5	-0.8	-1.3	+1.1	-0.6

COMMENTS: Quicksand is an outstanding ET calf from our magnificent donor dam Amaze 10. The Amaze line have been in the show ring exhibiting plenty of eye appeal and correctness. He is a scurred bull with positive calving ease and good birth weight and growth figures. He has a solid top line and is phenotypically correct. This bull is absolutely one of the best! Don't miss this opportunity to secure some very special genetics. EBVs available on sale day.

PURCHASER

\$

4

WAKEFIELD PHAROAH (AI) (P/S)

TATTOO: BIS P790E DOB: 09/04/2018 COLOUR: White

NWMSU DOC SILVER 362 PLD M669488 (OAU Y9488E) (P)

SIRE: PARINGA HARVEY H338 (TOL H338E) (P)

PARINGA BLUEGRASS D140 (TOL D140E) (P)

IJOUFFLU 6327351004 (OAF N6327F)

DAM: WAKEFIELD AMAZE 10 (BIS E445E)

WAKEFIELD AMAZE 2 (BIS C129E) (P)

S\$ MONTANA SILVER M454024 (OAU R4024E) (P)

NWMSU DOLORES ET 0035 F908646 (PED -8646E)

LT BLUEGRASS 4017P M686569 (OAU Z4017E) (P)

FERNVALE ZHIRL (FEN Z62E)

DIEGO RR3 1888102991 (PED X2991F)

GIROLLE 6391101387 (PED -1387F)

LHD MR PERFECT Y416 M 314744 (OAC J416E) (P)

WAKEFIELD AMAZE (BIS A820E)

Index	\$Value
Dom\$	+\$31
Exp\$	+\$36
NTerm\$	+\$17

June 2020 Australasian Charolais BREEDPLAN Analysis																
CE Dir	CE Dtr	GL	BW	200	400	600	MCW	Milk	SS	CWT	EMA	RIB	Rump	RBY	IMF	
EBV	+2.3	+2.6	-4.4	-0.7	+12	+25	+27	+20	+10	+1.0	+20	+2.1	-0.3	-0.3	+0.2	+0.9
Acc	51%	44%	72%	73%	60%	60%	60%	57%	50%	56%	51%	44%	49%	48%	46%	44%

COMMENTS: This scurred Paringa Harvey son catches your eye every time you go into the paddock. He has good conformation, standing on good feet and legs with tremendous length, muscle and eye appeal. Pharoah is slick coated and has plenty of punch on his dam's side from French sire Ijoufflu. His mother Amaze 10 is the dam of the Supreme Charolais exhibit at the Charolais National 2019. We rate Amaze 10 as the best cow we have ever bred! He has positive calving ease figures and above average growth, a real 'curve bender'. Well worth your consideration! Top 15% for short gestation length, top 20% for milk and top 5% for IMF.

PURCHASER

\$

5

WAKEFIELD PSEUDO ECHO (P) (R/F)

TATTOO: BIS P859E DOB: 03/10/2018 COLOUR: Red factor

HARVIE REDEMPTION 36P MC286641 (OAC Z6641E) (P)

SIRE: MONUMENT VALLEY JOHN (MVC K14E) (P)

GOBONGO REBBY W100E (GO W100E)

HARVIE JAGER 65J PMC228759 (OAC U8759E) (P)

DAM: WAKEFIELD ABRACADABRA 10 (BIS F760E) (P)

WAKEFIELD ABRACADABRA (BIS A821E)

LT WYOMING WIND 4020 PLD M411450(OAUP4020E)(P)

HARVIE MS MOLSON 53M FC316280 (PED -6280E) (P)

PALGROVE TRADER (PK T128E)

GOBONGO REBBIE (GO U44E)

LANG'S ERIC THE RED 3E MC178117 (PED -8117E) (P/S)

HARVIE MISS FRANCIS 47F FC234929 (OAC R4929E)

EXCALIBUR FMC423 M64617 (IAC E6084F)

MOUNT WILLIAM V92E (BS V92E)

Index	\$Value
Dom\$	+\$34
Exp\$	+\$45
NTerm\$	+\$25

June 2020 Australasian Charolais BREEDPLAN Analysis																
CE Dir	CE Dtr	GL	BW	200	400	600	MCW	Milk	SS	CWT	EMA	RIB	Rump	RBY	IMF	
EBV	+1.5	-1.0	-2.0	+0.6	+17	+35	+42	+30	+6	+1.7	+27	+2.3	+0.6	+0.8	+0.3	+0.2
Acc	45%	39%	53%	72%	52%	53%	55%	53%	45%	44%	44%	35%	41%	40%	39%	35%

COMMENTS: What's not to like about this fellow, make some noise for Pseudo Echo! This slick coated, polled bull has tremendous growth and power, a smooth muscle pattern with plenty of punch. He has plenty of capacity and carries himself very well. Would suit vealer operations as he is an early maturing bull. Top 10% for 400 day growth, top 15% for 200 day growth and carcass weight and top 20% for scrotal circumference and EMA.

PURCHASER

\$

6

WAKEFIELD PRINCE OF THIEVES (TW)

TATTOO: BIS P767E

DOB: 01/02/2018

COLOUR: White

WINN MANS LANZA 610S PMC307395 (OAC B7395E) (P)

SIRE: WAKEFIELD MASTERCLASS (BIS M101E) (P)

WAKEFIELD ACE 4 (BIS G34E)

ADVANCE DOMINO D36 (ADV D36E) (P)

DAM: WAKEFIELD AMAZE 38 (BIS L993E) (P/S)

WAKEFIELD AMAZE 10 (BIS E445E)

SPARROWS DURANGO 585P PMC289528 (PED -9528E)

WINN MAN MERIT 036K PFC317547 (PED -7547E)

HARVIE MOJO 115M QSMC272453 (OAC X2453E) (P/S)
WAKEFIELD ACE (BIS A862E)

LINKLETTER A11E (LJA A11E) (P)

ADVANCE GOLDSTAR Y46 (ADV Y46E)

IJOUFFLU 6327351004 (OAF N6327F)

WAKEFIELD AMAZE 2 (BIS C129E) (P)

Index	\$Value
Dom\$	+\$25
Exp\$	+\$33
NTerm\$	+\$18

June 2020 Australasian Charolais BREEDPLAN Analysis																
	CE Dir	CE Dtr	GL	BW	200	400	600	MCW	Milk	SS	CWT	EMA	RIB	Rump	RBY	IMF
EBV	+2.4	+1.5	-3.6	+0.3	+15	+27	+33	+30	+4	+1.8	+20	+0.6	-0.2	-0.6	+0.2	-0.1
Acc	37%	33%	45%	51%	42%	42%	42%	40%	36%	37%	36%	30%	32%	32%	31%	31%

COMMENTS: What's not to like about this bull. Prince Of Thieves is the natural calf of the Supreme Exhibit 2019 Amaze 38. His sire Wakefield Masterclass was sold for stud duties to Oakland Stud. He is a very correct bull that is bred in the purple. He is free moving with a long body, good neck extension with a good shoulder set and his calving figures suggest he will be good for calving ease while still maintaining his growth figures. This bull is top shelf genetics, a real stud sire in the making! Top 15% for scrotal circumference.

PURCHASER

\$

7

WAKEFIELD PRIDE AND JOY (P) (R/F)

TATTOO: BIS P834E

DOB: 04/09/2018

COLOUR: Red factor

MNE GOLDEN EAGLE 25W PMC 85384 (OAC G25E) (P/S)

SIRE: WAKEFIELD MAHARAJAH (BIS M179E) (P)

GOBONGO REBBY D213E (GO D213E) (P)

WAKEFIELD HORNBLOWER (BIS H203E) (P)

DAM: WAKEFIELD AMAZE 33 (BIS L909E) (P)

WAKEFIELD AMAZE 11 (BIS E484E) (P)

CHARDEL FALCON 503T MC63913 (OAC -503E)

EFH MISS T 10S FC81112 (PED -811E)

HARVIE JAGER 65J PMC228759 (OAC U8759E) (P)

GOBONGO REBBY W100E (GO W100E)

PINAY 8552394134 (OAF U4134F)

WAKEFIELD AMAZE 3 (BIS C154E) (P)

GOBONGO VILLEROY V80E (GO V80E)

WAKEFIELD AMAZE 2 (BIS C129E) (P)

Index	\$Value
Dom\$	+\$24
Exp\$	+\$35
NTerm\$	+\$22

June 2020 Australasian Charolais BREEDPLAN Analysis																
	CE Dir	CE Dtr	GL	BW	200	400	600	MCW	Milk	SS	CWT	EMA	RIB	Rump	RBY	IMF
EBV	+1.6	+1.7	-2.6	+1.1	+15	+25	+39	+31	+7	+1.1	+20	+1.8	+0.0	+0.1	+0.6	+0.0
Acc	41%	36%	46%	70%	47%	47%	49%	49%	38%	36%	37%	30%	32%	32%	31%	29%

COMMENTS: Pride & Joy has a good topline and depth of flank and carries himself with flare. Maharajah is giving us progeny with soft skin and smooth muscle patterns with a natural finishing ability. This polled bull stands on good feet and legs and will be an outstanding bull for any beef operation.

PURCHASER

\$

8

WAKEFIELD PATRIOT (P)

TATTOO: BIS P858E

DOB: 08/09/2018

COLOUR: White

CML ENCORE 4Y MC339109 (OAC G9109E) (P)

SIRE: WAKEFIELD MASQUERADE (BIS M152E) (P)

WAKEFIELD ACE (BIS A862E)

PINAY 8552394134 (OAF U4134F)

DAM: WAKEFIELD EMBER 2 (BIS H202E)

WAKEFIELD EMBER (BIS E447E) (P)

SPARROWS SANCHEZ 715T MC310816 (OAC C816E) (P)

CML PLD WILMA 3S PFC365414 (OAC B5414E) (P)

SILVERSTREAM JONAH J91F 83/FF12682/94 (83 J91F)

MOUNT WILLIAM V92E (BS V92E)

IMPAIR 1893102983 (OAF N189F)

MARY 8596100049 (OAF R8596F)

WCR SIR DUKE 835 M286251 (OAU H835E) (P)

WAKEFIELD BISCUIT (BIS B929E)

Index	\$Value
Dom\$	+\$36
Exp\$	+\$48
NTerm\$	+\$22

June 2020 Australasian Charolais BREEDPLAN Analysis																
	CE Dir	CE Dtr	GL	BW	200	400	600	MCW	Milk	SS	CWT	EMA	RIB	Rump	RBY	IMF
EBV	+6.3	+6.4	-5.3	-0.7	+10	+22	+32	+31	+11	+0.9	+23	+1.9	+0.0	-0.4	+0.4	+0.2
Acc	41%	36%	49%	69%	48%	47%	49%	49%	37%	34%	36%	29%	31%	31%	30%	29%

COMMENTS: Patriot is another wonderful phenotypically correct bull by Wakefield Masquerade. He has tremendous growth and power he carries himself extremely well for such a well muscled bull. He has plenty of grunt and would suit any beef operation. A real true to type Charolais bull. Top 10% for gestation length and calving ease on daughters and top 20% for calving ease direct and domestic index and top 15% for milk.

PURCHASER

\$

9

WAKEFIELD PADDINGTON (P) (R/F)

TATTOO: BIS P890E DOB: 25/09/2018 COLOUR: Red factor

LT LEDGER 0332 M791626 (OAU F3168E) (P)

SIRE: WAKEFIELD LORAX (BIS L982E) (P)

AIRLIE FRIESIA G726E (A1S G726E) (P)

WAKEFIELD JACK FLASH (BIS J635E) (P)

DAM: WAKEFIELD ALANNA 55 (BIS M127E) (P)

WAKEFIELD ALANNA 32 (BIS H278E)

LT BLUEGRASS 4017P M686569 (OAU Z4017E) (P)

LT BRENDA 6120 PLD F1046992 (PED -6992E)

AIRLIE CARMELO (A1S C150F)

AIRLIE FRIESIA B735E (A1S B735E) (P)

RANGAN PARK REDEMPTION E42 (RAN E42E) (P)

WAKEFIELD ACE (BIS A862E)

WAKEFIELD FUDGE (BIS F776E) (P)

WAKEFIELD ALANNA 21 (BIS F703E)

Index	\$Value
Dom\$	+\$40
Exp\$	+\$55
NTerm\$	+\$25

June 2020 Australasian Charolais BREEDPLAN Analysis																
CE Dir	CE Dtr	GL	BW	200	400	600	MCW	Milk	SS	CWT	EMA	RIB	Rump	RBY	IMF	
EBV	+6.6	+2.0	-2.3	-0.7	+13	+26	+33	+23	+7	+1.6	+24	+2.3	+0.7	+0.9	+0.1	+0.3
Acc	40%	31%	50%	69%	46%	46%	49%	47%	33%	36%	35%	29%	33%	32%	31%	28%

COMMENTS: There is a lot to like about this Lorax son nicknamed Lawn Boy (he spent some time in our garden, Casey thinks he should be called Sir Walter!!). He is double polled has tremendous thickness of body and a great top line. Paddington has a lovely temperament and should have good calving ease figures. Well worth your consideration. Top 15% for Domestic and Export indices and top 20% for calving ease direct, scrotal circumference and EMA.

PURCHASER _____

\$

10

WAKEFIELD PRETENDER (AI) (ET)

TATTOO: BIS P785E DOB: 04/04/2018 COLOUR: White

ARAGON A20 58112 A20 (ZZF X1232F)

SIRE: CARABINIER 71357 C33 (IAF C6041F)

TERPSICHORE T22 71357 T22 (ZZF X825F)

GUNNADOO MACHO MAN (GN1 M8D)

DAM: CHAROSE STUD REGENCY (C2R R7E) (P)

MONTEVIDEO CAMALIRA (OPL D50E)

SIBIR S19 M 58112 S19 (ZZF X1234F)

PICARDIE F 68593 (ZZF X755F)

QUI-VIVE Q22 M 71356 Q22 (ZZF X1371F)

NYMPHE F 52169 (ZZF X519F)

BAR DIAMOND PRESTIGE 10Y 105967 (IAC J10E)

GUNNADOO D105C (GN1 D105C)

BIRCHFIELD APOLLON 5C (IAC A6077E)

MANDALONG CAMERADERTE 5 (RP R14D) (P)

Index	\$Value
Dom\$	-\$9
Exp\$	-\$13
NTerm\$	+\$3

June 2020 Australasian Charolais BREEDPLAN Analysis																
CE Dir	CE Dtr	GL	BW	200	400	600	MCW	Milk	SS	CWT	EMA	RIB	Rump	RBY	IMF	
EBV	-2.1	-14.5	-0.6	+0.7	+6	+8	+11	+17	+4	+0.4	+4	+0.6	+0.3	+0.2	-0.2	+0.2
Acc	50%	51%	56%	55%	55%	54%	54%	52%	57%	48%	50%	38%	38%	37%	37%	35%

COMMENTS: Pretender is the son of an old full french bull called Carabinier. We purchased this embryo from the Shiloh dispersal. He is a true to type Charolais with a good topline, neck extension, muscle and a powerful head.

PURCHASER _____

\$

11

WAKEFIELD PIMP MY HIDE (P) (R/F)

TATTOO: BIS P810E DOB: 20/06/2018 COLOUR: Red factor

LT LEDGER 0332 M791626 (OAU F3168E) (P)

SIRE: WAKEFIELD LORAX (BIS L982E) (P)

AIRLIE FRIESIA G726E (A1S G726E) (P)

HARVIE MOJO 115M QSMC272453 (OAC X2453E) (P/S)

DAM: WAKEFIELD ACE 7 (BIS K846E)

WAKEFIELD ACE (BIS A862E)

LT BLUEGRASS 4017P M686569 (OAU Z4017E) (P)

LT BRENDA 6120 PLD F1046992 (PED -6992E)

AIRLIE CARMELO (A1S C150F)

AIRLIE FRIESIA B735E (A1S B735E) (P)

HARVIE JAGER 65J PMC228759 (OAC U8759E) (P)

HARVIE MISS GELLIA 35G PFC250803 (OAC S2508E)(P)

SILVERSTREAM JONAH J91F 83/FF12682/94 (83 J91F)

MOUNT WILLIAM V92E (BS V92E)

Index	\$Value
Dom\$	+\$39
Exp\$	+\$52
NTerm\$	+\$24

June 2020 Australasian Charolais BREEDPLAN Analysis																
CE Dir	CE Dtr	GL	BW	200	400	600	MCW	Milk	SS	CWT	EMA	RIB	Rump	RBY	IMF	
EBV	+7.7	+1.2	-2.7	-0.7	+12	+26	+31	+22	+8	+2.2	+21	+1.5	+0.2	+0.4	-0.1	+0.4
Acc	42%	34%	44%	64%	46%	46%	47%	46%	38%	37%	36%	30%	34%	33%	32%	29%

COMMENTS: Pimp My Hide, the son of Wakefield Lorax has tremendous length of body, muscle with a very correct phenotype. He is a polled bull that has a smooth muscle pattern and excellent calving figures, he is easy fleshing, a true to type Charolais. Top 15% for calving ease direct and domestic index and top 10% for scrotal circumference and top 20% for Export index.

PURCHASER _____

\$

12

WAKEFIELD PIPPIN (P) (R/F)

TATTOO: BIS P789E DOB: 08/04/2018 COLOUR: Red factor

LT LEDGER 0332 M791626 (OAU F3168E) (P)

SIRE: WAKEFIELD LORAX (BIS L982E) (P)

AIRLIE FRIESIA G726E (A1S G726E) (P)

ASCOT ELDORADO (JAJ E14E) (P)

DAM: WAKEFIELD AUTUMN 12 (BIS K809E) (P)

WAKEFIELD AUTUMN 6 (BIS D348E) (P)

LT BLUEGRASS 4017P M686569 (OAU Z4017E) (P)

LT BRENDA 6120 PLD F1046992 (PED -6992E)

AIRLIE CARMELO (A1S C150F)

AIRLIE FRIESIA B735E (A1S B735E) (P)

CS PLD JUNCTION 4J MC228742 (OAC U8742E) (P)

GOBONGO ISABELLA D10E (GO D10E) (P)

INDIANA 0393112617 (OAF N393F)

WAKEFIELD AUTUMN (BIS A810E) (P)

Index	\$Value
Dom\$	+\$25
Exp\$	+\$34
NTerm\$	+\$20



June 2020 Australasian Charolais BREEDPLAN Analysis

	CE Dir	CE Dtr	GL	BW	200	400	600	MCW	Milk	SS	CWT	EMA	RIB	Rump	RBY	IMF
EBV	+1.6	-5.1	-3.2	-0.5	+15	+27	+33	+34	+4	+1.9	+21	+1.9	+0.3	+0.5	+0.1	+0.3
Acc	43%	35%	51%	70%	49%	49%	50%	49%	38%	40%	38%	32%	36%	36%	34%	32%

COMMENTS: Another exceptional son from Wakefield Lorax. Pippin is a polled, red factor bull with incredible power and thickness. This bull will have good growth and finishing ability while maintaining the muscle pattern that Charolais are renowned for. He is a long, free-moving, soft and true-to-type Charolais. Top 15% for scrotal circumference

PURCHASER

\$

13

WAKEFIELD PUNTER (AI) (P) (R/F)

TATTOO: BIS P774E DOB: 26/03/2018 COLOUR: Red factor

JSR TROPHY 88T (OAC C9184E) (P)

SIRE: PCC SPARTAN 4Y PEMC336672 (OAC G6672E) (P)

SPARROWS TEMPEST 174K PFC290732 (PED -732E) (P)

HARVIE JAGER 65J PMC228759 (OAC U8759E) (P)

DAM: WAKEFIELD FOXY LADY (BIS F748E) (P)

WAKEFIELD ANNA (BIS A802E) (P)

JSR TRUMP 7N (OAC Y508E) (P)

JSR KNOCKOUT 93M (OAC X4263E) (P)

SPARROWS ADVANTAGE 230H PMC215580 (PED-5580E)

SPARROWS SPARKEL 74F PFC238148 (PED -8148E) (P)

LANG'S ERIC THE RED 3E MC178117 (PED -8117E)(P/S)

HARVIE MISS FRANCIS 47F FC234929 (OAC R4929E)

CHARNELLE TANNESSEE R/F (GKA T83E) (P)

MOUNT WILLIAM V92E (BS V92E)

Index	\$Value
Dom\$	+\$35
Exp\$	+\$51
NTerm\$	+\$24



June 2020 Australasian Charolais BREEDPLAN Analysis

	CE Dir	CE Dtr	GL	BW	200	400	600	MCW	Milk	SS	CWT	EMA	RIB	Rump	RBY	IMF
EBV	+4.2	+4.7	-3.7	+0.1	+13	+28	+39	+22	+3	+1.7	+24	+1.4	+0.4	+0.2	+0.2	-0.1
Acc	41%	32%	72%	71%	52%	52%	55%	50%	37%	48%	41%	31%	37%	36%	34%	31%

COMMENTS: Punter is a polled red factor son from Canadian show winning sire PCC Spartan. He is a bull that has soft muscling patterns and good finishing ability combined with growth and overall eye appeal, this bull has it all. Top 20% for calving ease daughters, scrotal size, domestic and export indexes.

PURCHASER

\$

14

WAKEFIELD POETRY IN MOTION (P) (R/F)

TATTOO: BIS P869E DOB: 12/09/2018 COLOUR: Red factor

KEYS ALL STATE 149X M792787 (OAU F2787E) (P)

SIRE: WAKEFIELD LINE OUT (BIS L994E) (P)

AIRLIE FRIESIA G726E (A1S G726E) (P)

HARVIE MOJO 115M QSMC272453 (OAC X2453E) (P/S)

DAM: WAKEFIELD ALANNA 37 (BIS J539E) (P)

WAKEFIELD ALANNA (BIS A803E) (P)

KEYS SPECIALIST 18U M761126 (OAU -1126E) (P)

MISS KEY MEG 2T F1079615 (OAU -9615E) (P)

AIRLIE CARMELO (A1S C150F)

AIRLIE FRIESIA B735E (A1S B735E) (P)

HARVIE JAGER 65J PMC228759 (OAC U8759E) (P)

HARVIE MISS GELLIA 35G PFC250803 (OAC S2508E)(P)

CHARNELLE TANNESSEE R/F (GKA T83E) (P)

MOUNT WILLIAM V92E (BS V92E)

Index	\$Value
Dom\$	+\$20
Exp\$	+\$29
NTerm\$	+\$19



June 2020 Australasian Charolais BREEDPLAN Analysis

	CE Dir	CE Dtr	GL	BW	200	400	600	MCW	Milk	SS	CWT	EMA	RIB	Rump	RBY	IMF
EBV	-3.8	+0.2	-3.1	+1.5	+13	+32	+43	+36	+4	+1.9	+29	+2.4	+0.0	-0.2	+0.8	-0.2
Acc	41%	32%	46%	70%	47%	47%	49%	48%	36%	36%	35%	26%	31%	31%	29%	26%

COMMENTS: Poetry In Motion is a double polled bull with plenty of muscularity, length of body and structural soundness. He has plenty of growth on a large frame. This bull would suit many beef cattle operations. Top 20% for 400 and 600 day growth and retail beef yield, top 15% for scrotal and EMA.

PURCHASER

\$

15

WAKEFIELD MASQUERADE (AI) (ET) (P)

TATTOO: BIS M152E

DOB: 04/04/2016

COLOUR: White

SPARROWS SANCHEZ 715T MC310816 (OAC C816E) (P)

SIRE: CML ENCORE 4Y MC339109 (OAC G9109E) (P)

CML PLD WILMA 3S PFC365414 (OAC B5414E) (P)

SILVERSTREAM JONAH J91F 83/FF12682/94 (83 J91F)

DAM: WAKEFIELD ACE (BIS A862E)

MOUNT WILLIAM V92E (BS V92E)

SPARROWS ALCATRAZ 18N MC284009 (PED -4009E)

SPARROWS DANA 321L (PED -7964E)

MERIT VINTAGE 4065P PMC290414 (OAC -414E) (P)

TARGET PLD GINNY 40P PFC340486 (OAC Z486E) (P)

CRANEBROOK STUART S1 MF0012942 (IAE A6197F)

BROOKFIELD OCELOT O17 253/FF1713/78 (253 O17F)

TALGOONA QANTAS (CG Q4E)

MOUNT WILLIAM SYBIL (BS S72E)

Index	\$Value
Dom\$	+\$31
Exp\$	+\$44
NTerm\$	+\$16



June 2020 Australasian Charolais BREEDPLAN Analysis

	CE Dir	CE Dtr	GL	BW	200	400	600	MCW	Milk	SS	CWT	EMA	RIB	Rump	RBY	IMF
EBV	+5.7	+7.5	-3.2	-0.7	+7	+14	+19	+18	+6	+1.1	+16	+1.5	+1.0	+0.9	-0.2	-0.3
Acc	57%	45%	55%	82%	56%	56%	58%	58%	46%	39%	42%	32%	34%	34%	33%	31%

COMMENTS: Masquerade has been a very successful sire in the Wakefield herd for the last couple of years. He has sons at this sale that are true to type Charolais, full of power with tremendous length of body and great top lines. He is a polled bull by Canadian sire CML Encore out of our original Ace cow that has produced many outstanding animal in the Wakefield herd. His full flush brother was the top priced bull at our 2017 bull sale selling to Vida Montana. Top 5% on calving ease on daughters and top 20% for rib fat.

PURCHASER

\$

16

WAKEFIELD POT OF GOLD (AI) (P/S) (R/F)

TATTOO: BIS P814E

DOB: 13/08/2018

COLOUR: Red factor

PALGROVE ADMIRAL S WW1547XBA01861 (PK A422E) (P)

SIRE: KINDARA DESTINY (K4P D34E)

BUNYA-VALE XTRA NICE (BYV X3E)

WAKEFIELD EXHILARATE (BIS E474E)

DAM: WAKEFIELD BLUSH 2 (BIS H269E) (P)

WAKEFIELD BLUSH (BIS B938D) (P)

PALGROVE URANUS R/F (PK U243D)

PALGROVE FRIESIA 10 (PK T113E) (P)

TEMANA T74E (TJ T74E)

BUNYA VALE QUITE RELUCTANT (BYV Q21E)

PINAY 8552394134 (OAF U4134F)

WAKEFIELD AMAZE 3 (BIS C154E) (P)

WAKEFIELD ACQUIT (BIS W195E)

WAKEFIELD YASMINE (BIS Y500C) (P)

Index	\$Value
Dom\$	+\$21
Exp\$	+\$32
NTerm\$	+\$22



June 2020 Australasian Charolais BREEDPLAN Analysis

	CE Dir	CE Dtr	GL	BW	200	400	600	MCW	Milk	SS	CWT	EMA	RIB	Rump	RBY	IMF
EBV	+1.1	-4.5	-1.7	+1.4	+15	+29	+43	+53	+5	+1.4	+25	+1.8	+0.0	-0.1	+0.2	+0.3
Acc	46%	39%	73%	73%	55%	55%	56%	54%	43%	49%	44%	35%	37%	37%	36%	34%

COMMENTS: Pot Of Gold is a scurred red factor bull by Australian sire Kindara Destiny out of our show winning Blush 2 cow. This powerful bull has plenty of muscle, growth, body length and finishing ability. Top 20% for 600 day growth

PURCHASER

\$

17

WAKEFIELD POWER PACK (R/F)

TATTOO: BIS P825E

DOB: 21/08/2018

COLOUR: Red factor

CML ENCORE 4Y MC339109 (OAC G9109E) (P)

SIRE: WAKEFIELD MASQUERADE (BIS M152E) (P)

WAKEFIELD ACE (BIS A862E)

WAKEFIELD GOLDMINE (BIS G47E) (P)

DAM: WAKEFIELD WALLAH 10 (BIS J585E) (P)

WAKEFIELD WALLAH 7 (BIS G32E)

SPARROWS SANCHEZ 715T MC310816 (OAC C816E) (P)

CML PLD WILMA 3S PFC365414 (OAC B5414E) (P)

SILVERSTREAM JONAH J91F 83/FF12682/94 (83 J91F)

MOUNT WILLIAM V92E (BS V92E)

TR RED SMOKE M723761 (OAU B6641E) (P)

WAKEFIELD EMILY (BIS E438E)

PINAY 8552394134 (OAF U4134F)

WAKEFIELD WALLAH 2 (BIS B916E)

Index	\$Value
Dom\$	+\$32
Exp\$	+\$43
NTerm\$	+\$18



June 2020 Australasian Charolais BREEDPLAN Analysis

	CE Dir	CE Dtr	GL	BW	200	400	600	MCW	Milk	SS	CWT	EMA	RIB	Rump	RBY	IMF
EBV	+3.8	+7.8	-4.6	-0.7	+10	+20	+26	+26	+7	+0.9	+20	+1.7	+0.5	+0.3	+0.2	+0.0
Acc	38%	30%	45%	69%	45%	45%	48%	47%	31%	31%	33%	26%	28%	28%	27%	25%

COMMENTS: Power Pack is another son by Wakefield Masquerade M152. This bull exhibits tremendous growth and thickness combined with a set of positive carcass data and excellent calving figures. He is a long, free-moving, soft and true-to-type Charolais. Don't overlook this bull. Top 5% for calving ease daughters and top 15% for gestation length.

PURCHASER

\$

18

WAKEFIELD POPCORN (R/F)

TATTOO: BIS P914E DOB: 14/10/2018 COLOUR: Red factor

WAKEFIELD JUMBLE (BIS J526E) (P/S)

SIRE: WAKEFIELD MAGENTA (BIS M163E) (P)

WAKEFIELD CLASSIQUE 3 (BIS H212E) (P)

LHD MR PERFECT Y416 M 314744 (OAC J416E) (P)

DAM: WAKEFIELD ELVIRA (BIS E401E) (P)

WAKEFIELD BISCUIT (BIS B929E)

ESPION (IAF E6034F)

WAKEFIELD BRILLIANT (BIS B958E)

WINN MANS LANZA 610S PMC307395 (OACB7395E)(P)

BOONGATTI CLASSIQUE 2 E82 (BOO E82E) (P)

WCR SIR PERFECTION 734 M272305 (OAC -734E)

LHD MS SHOWME OFF W159 F496651 (OAC -159E)

PALGROVE MURDOCK R/F (PK M109E)

AIRLIE MAHLAN (A1S M81E)

Index	\$Value
Dom\$	+\$34
Exp\$	+\$45
NTerm\$	+\$21



June 2020 Australasian Charolais BREEDPLAN Analysis

	CE Dir	CE Dtr	GL	BW	200	400	600	MCW	Milk	SS	CWT	EMA	RIB	Rump	RBY	IMF
EBV	+4.6	+5.2	-4.1	-0.8	+14	+25	+32	+24	+8	+1.3	+18	+1.0	+0.0	-0.1	+0.2	+0.1
Acc	41%	36%	47%	69%	48%	48%	50%	48%	39%	38%	38%	31%	34%	33%	32%	30%

COMMENTS: Popcorn is a red factor, very thick bull that catches the eye. He has positive calving ease, above average growth and once again a positive carcass data set. Top 15% for calving ease daughters and top 20% for gestation length and birth weight.

PURCHASER

\$

19

WAKEFIELD PARTYLINE (P)

TATTOO: BIS P849E DOB: 04/09/2018 COLOUR: White

CML ENCORE 4Y MC339109 (OAC G9109E) (P)

SIRE: WAKEFIELD MASQUERADE (BIS M152E) (P)

WAKEFIELD ACE (BIS A862E)

PINAY 8552394134 (OAF U4134F)

DAM: WAKEFIELD CLOVER 2 (BIS H271E) (P)

WAKEFIELD CLOVER (BIS C104D) (P)

SPARROWS SANCHEZ 715T MC310816 (OAC C816E)(P)

CML PLD WILMA 3S PFC365414 (OAC B5414E) (P)

SILVERSTREAM JONAH J91F 83/FF12682/94 (83 J91F)

MOUNT WILLIAM V92E (BS V92E)

IMPAIR 1893102983 (OAF N189F)

MARY 8596100049 (OAF R8596F)

SHAMROCK AMBASSADEUR MFI0999990 (IAEE6159F)

WAKEFIELD YASMINE (BIS Y500C) (P)

Index	\$Value
Dom\$	+\$30
Exp\$	+\$39
NTerm\$	+\$17



June 2020 Australasian Charolais BREEDPLAN Analysis

	CE Dir	CE Dtr	GL	BW	200	400	600	MCW	Milk	SS	CWT	EMA	RIB	Rump	RBY	IMF
EBV	+6.2	+6.5	-4.5	-1.0	+6	+14	+19	+19	+9	+0.5	+17	+2.2	+0.1	-0.2	+0.5	+0.0
Acc	42%	36%	49%	69%	47%	47%	49%	49%	38%	36%	37%	30%	32%	32%	31%	29%

COMMENTS: Partyline is another polled Masquerade M152 son out of a smooth coated Pinay daughter. Masquerade continues to stamp his progeny with the consistency we expect from the Ace line. Partyline is a soft coated bull with good growth and a natural doing ability. A bull that would suit many beef enterprises. Well worth a look! Top 10% for calving ease daughters, top 15% for gestation length, top 20% for calving ease direct, low birth weight and EMA

PURCHASER

\$

20

WAKEFIELD PIONEER (P/S)

TATTOO: BIS P857E DOB: 08/09/2018 COLOUR: White

CML ENCORE 4Y MC339109 (OAC G9109E) (P)

SIRE: WAKEFIELD MASQUERADE (BIS M152E) (P)

WAKEFIELD ACE (BIS A862E)

LT BLUEGRASS 4017P M686569 (OAU Z4017E) (P)

DAM: WAKEFIELD AMAZE 13 (BIS G44E) (P)

WAKEFIELD AMAZE 9 (BIS E435E)

SPARROWS SANCHEZ 715T MC310816 (OAC C816E)(P)

CML PLD WILMA 3S PFC365414 (OAC B5414E) (P)

SILVERSTREAM JONAH J91F 83/FF12682/94 (83 J91F)

MOUNT WILLIAM V92E (BS V92E)

LT ASSERTION 1277 M620193 (PED W1277F) (P)

LT PEARLS BREEZE 2236 F956080 (PED X2236F) (P)

IJOUFFLU 6327351004 (OAF N6327F)

WAKEFIELD AMAZE 2 (BIS C129E) (P)

Index	\$Value
Dom\$	+\$31
Exp\$	+\$40
NTerm\$	+\$18



June 2020 Australasian Charolais BREEDPLAN Analysis

	CE Dir	CE Dtr	GL	BW	200	400	600	MCW	Milk	SS	CWT	EMA	RIB	Rump	RBY	IMF
EBV	+8.4	+3.6	-3.4	-0.5	+11	+17	+18	+14	+6	+0.7	+17	+2.1	+0.2	+0.0	+0.6	-0.2
Acc	42%	37%	50%	70%	49%	50%	52%	50%	38%	39%	40%	32%	38%	37%	35%	33%

COMMENTS: Pioneer is a scurred Masquerade M152 son. The Masquerade progeny are true to Charolais type with good toplines, neck extension and powerful heads. Will add finishing ability. Top 15% for calving ease direct.

PURCHASER

\$

21

WAKEFIELD PRIMO

TATTOO: BIS P862E DOB: 10/09/2018 COLOUR: White

CML ENCORE 4Y MC339109 (OAC G9109E) (P)
SIRE: WAKEFIELD MASQUERADE (BIS M152E) (P)
 WAKEFIELD ACE (BIS A862E)
 PINAY 8552394134 (OAF U4134F)
DAM: WAKEFIELD GLORY GIRL (BIS G59E) (P)
 WAKEFIELD ANNA (BIS A802E) (P)

SPARROWS SANCHEZ 715T MC310816 (OAC C816E)(P)
 CML PLD WILMA 3S PFC365414 (OAC B5414E) (P)
 SILVERSTREAM JONAH J91F 83/FF12682/94 (83 J91F)
 MOUNT WILLIAM V92E (BS V92E)
 IMPAIR 1893102983 (OAF N189F)
 MARY 8596100049 (OAF R8596F)
 CHARNELLE TANNESSEE R/F (GKA T83E) (P)
 MOUNT WILLIAM V92E (BS V92E)

Index	\$Value
Dom\$	+\$29
Exp\$	+\$40
NTerm\$	+\$18



June 2020 Australasian Charolais BREEDPLAN Analysis

	CE Dir	CE Dtr	GL	BW	200	400	600	MCW	Milk	SS	CWT	EMA	RIB	Rump	RBY	IMF
EBV	+3.6	+9.3	-5.0	-0.1	+8	+17	+26	+26	+6	+0.6	+20	+2.4	+0.3	+0.0	+0.6	-0.1
Acc	43%	37%	51%	70%	50%	50%	53%	51%	39%	38%	40%	33%	38%	37%	36%	33%

COMMENTS: Primo is a very neat, correct bull that catches your eye. He is a deep flanked bull that will produce powerful progeny with good growth and muscle. Top 5% for calving ease on daughters, top 10% for gestation length and EMA.

PURCHASER

\$

22

WAKEFIELD PARATROOPER (P)

TATTOO: BIS P877E DOB: 18/09/2018 COLOUR: White

CML ENCORE 4Y MC339109 (OAC G9109E) (P)
SIRE: WAKEFIELD MASQUERADE (BIS M152E) (P)
 WAKEFIELD ACE (BIS A862E)
 PARINGA SENTINAL RULER C93E (TOL C93E) (P)
DAM: WAKEFIELD EDEN (BIS E414E) (P)
 WAKEFIELD CLOVER (BIS C104D) (P)

SPARROWS SANCHEZ 715T MC310816 (OAC C816E)(P)
 CML PLD WILMA 3S PFC365414 (OAC B5414E) (P)
 SILVERSTREAM JONAH J91F 83/FF12682/94 (83 J91F)
 MOUNT WILLIAM V92E (BS V92E)
 MD SENTINAL RULER G1520 M509416(OAUS9416E)(P/S)
 PARINGA DUKE Z1808 (TOL Z1808E)
 SHAMROCK AMBASSADEUR MFI0999990 (IAEE6159F)
 WAKEFIELD YASMINE (BIS Y500C) (P)

Index	\$Value
Dom\$	+\$26
Exp\$	+\$36
NTerm\$	+\$15



June 2020 Australasian Charolais BREEDPLAN Analysis

	CE Dir	CE Dtr	GL	BW	200	400	600	MCW	Milk	SS	CWT	EMA	RIB	Rump	RBY	IMF
EBV	+4.8	+3.1	-2.5	-0.4	+8	+15	+21	+23	+9	+0.6	+11	+0.3	+0.7	+0.7	-0.8	+0.4
Acc	40%	32%	49%	70%	48%	48%	50%	49%	36%	35%	36%	28%	34%	34%	32%	28%

COMMENTS: Paratrooper is a very stylish bull by Masquerade. Masquerade has bred some exceptional sons and daughters that have soft skin, good calving ease and a natural do ability. This young bull has plenty of muscle, and stands on a good frame. Paratrooper is guaranteed to put plenty of meat into his progeny, we're sure he will measure up!.

PURCHASER

\$

23

WAKEFIELD PAIMEI (P) (R/F)

TATTOO: BIS P820E DOB: 14/08/2018 COLOUR: Red factor

LT LEDGER 0332 M791626 (OAU F3168E) (P)
SIRE: WAKEFIELD LORAX (BIS L982E) (P)
 AIRLIE FRIESIA G726E (A1S G726E) (P)
 WAKEFIELD HORNBLOWER (BIS H203E) (P)
DAM: WAKEFIELD GEISHA GIRL 2 (BIS L924E)
 WAKEFIELD GEISHA GIRL (BIS G62E) (P)

LT BLUEGRASS 4017P M686569 (OAU Z4017E) (P)
 LT BRENDA 6120 PLD F1046992 (PED -6992E)
 AIRLIE CARMELO (A1S C150F)
 AIRLIE FRIESIA B735E (A1S B735E) (P)
 PINAY 8552394134 (OAF U4134F)
 WAKEFIELD AMAZE 3 (BIS C154E) (P)
 CS PLD JUNCTION 4J MC228742 (OAC U8742E) (P)
 WAKEFIELD ALANNA 5 (BIS C136E)

Index	\$Value
Dom\$	+\$40
Exp\$	+\$53
NTerm\$	+\$24



June 2020 Australasian Charolais BREEDPLAN Analysis

	CE Dir	CE Dtr	GL	BW	200	400	600	MCW	Milk	SS	CWT	EMA	RIB	Rump	RBY	IMF
EBV	+8.7	+2.8	-4.2	-1.5	+11	+22	+28	+20	+8	+1.4	+22	+2.4	+0.2	+0.3	+0.4	+0.2
Acc	40%	32%	44%	70%	47%	47%	49%	48%	35%	37%	36%	29%	33%	33%	31%	29%

COMMENTS: This son of Wakefield Lorax has tremendous length of body, smooth shoulders with a very correct phenotype. Paimei is a polled bull that has a smooth muscle pattern and tremendous calving figures while maintaining above average growth figures, a genuine curve bender with positive carcass data. We are sure you will be happy with his progeny! Look out Kill Bill! Top 15% for calving ease direct and low birth weight, EMA and Domestic and Export indices, top 20% for gestation length.

PURCHASER

\$

24

WAKEFIELD PROMO

TATTOO: BIS P856E

DOB: 08/09/2018

COLOUR: White

CML ENCORE 4Y MC339109 (OAC G9109E) (P)

SIRE: WAKEFIELD MASQUERADE (BIS M152E) (P)

WAKEFIELD ACE (BIS A862E)

WAKEFIELD HORNBLOWER (BIS H203E) (P)

DAM: WAKEFIELD ABRACADABRA 22 (BIS L908E)

WAKEFIELD ABRACADABRA 7 (BIS E449E)

SPARROWS SANCHEZ 715T MC310816 (OAC C816E)(P)

CML PLD WILMA 3S PFC365414 (OAC B5414E) (P)

SILVERSTREAM JONAH J91F 83/FF12682/94 (83 J91F)

MOUNT WILLIAM V92E (BS V92E)

PINAY 8552394134 (OAF U4134F)

WAKEFIELD AMAZE 3 (BIS C154E) (P)

PARINGA SENTINAL RULER C93E (TOL C93E) (P)

WAKEFIELD ABRACADABRA 3 (BIS C133E) (P)

Index	\$Value
Dom\$	+\$30
Exp\$	+\$41
NTerm\$	+\$20



June 2020 Australasian Charolais BREEDPLAN Analysis

	CE Dir	CE Dtr	GL	BW	200	400	600	MCW	Milk	SS	CWT	EMA	RIB	Rump	RBY	IMF
EBV	+4.8	+4.2	-4.4	-0.1	+11	+21	+28	+27	+6	+0.4	+20	+1.9	+0.6	+0.5	+0.1	
Acc	38%	31%	43%	69%	45%	45%	47%	46%	32%	30%	32%	25%	27%	27%	26%	

COMMENTS: Promo is a bull that has plenty of muscle, depth of body and eye appeal, which is what we've come to expect from the Masquerade sons. Good calving ease on this bull. Well worth your consideration! Top 15% for gestation length, top 20% for calving ease on daughters.

PURCHASER

\$

25

WAKEFIELD POKERFACE (P)

TATTOO: BIS P770E

DOB: 24/03/2018

COLOUR: White

LT LEDGER 0332 M791626 (OAU F3168E) (P)

SIRE: WAKEFIELD LORAX (BIS L982E) (P)

AIRLIE FRIESIA G726E (A1S G726E) (P)

HICKS REMINGTON 31U PMC321438 (OAC D1438E) (P)

DAM: WAKEFIELD EVERMORE 3 (BIS J551E) (P)

WAKEFIELD EVERMORE (BIS E488E) (P)

LT BLUEGRASS 4017P M686569 (OAU Z4017E) (P)

LT BRENDA 6120 PLD F1046992 (PED -6992E)

AIRLIE CARMELO (A1S C150F)

AIRLIE FRIESIA B735E (A1S B735E) (P)

WESC HICKS REVOLVER 14R PMC295963 (PED -5963E)

JWK RUBY K003 PFC332642 (PED -2642E)

PINAY 8552394134 (OAF U4134F)

WAKEFIELD BECOOL (BIS B948E) (P)

Index	\$Value
Dom\$	+\$44
Exp\$	+\$58
NTerm\$	+\$24



June 2020 Australasian Charolais BREEDPLAN Analysis

	CE Dir	CE Dtr	GL	BW	200	400	600	MCW	Milk	SS	CWT	EMA	RIB	Rump	RBY	IMF
EBV	+10.8	+3.3	-5.4	-1.7	+13	+23	+26	+17	+7	+1.8	+18	+1.4	+0.5	+0.6	-0.2	+0.4
Acc	42%	33%	51%	70%	48%	48%	50%	49%	37%	38%	36%	29%	33%	33%	31%	29%

COMMENTS: Pokerface is a polled bull with plenty of growth and depth of body on a good frame. His calving ease and gestation traits are good and his growth and carcass traits make him a 'curver bender'. His dam Evermore 3 is fertile, with a great udder set and is an all round good doing cow! Top 10% for calving ease direct, gestation and birth weight and Domestic and Export indexes and top 15% for scrotal size.

PURCHASER

\$

26

WAKEFIELD PROSPECTOR

TATTOO: BIS P850E

DOB: 04/09/2018

COLOUR: White

MNE GOLDEN EAGLE 25W PMC 85384 (OAC G25E) (P/S)

SIRE: WAKEFIELD MAHARAJAH (BIS M179E) (P)

GOBONGO REBBY D213E (GO D213E) (P)

WAKEFIELD HORNBLOWER (BIS H203E) (P)

DAM: WAKEFIELD FRIESIA 3 (BIS L915E) (P)

WAKEFIELD FRIESIA (BIS F739E)

CHARDEL FALCON 503T MC63913 (OAC -503E)

EFH MISS T 10S FC81112 (PED -811E)

HARVIE JAGER 65J PMC228759 (OAC U8759E) (P)

GOBONGO REBBY W100E (GO W100E)

PINAY 8552394134 (OAF U4134F)

WAKEFIELD AMAZE 3 (BIS C154E) (P)

BLAWEARY BAROQUE (BLO B1E) (P)

WAKEFIELD CLOVER (BIS C104D) (P)

Index	\$Value
Dom\$	+\$23
Exp\$	+\$32
NTerm\$	+\$18



June 2020 Australasian Charolais BREEDPLAN Analysis

	CE Dir	CE Dtr	GL	BW	200	400	600	MCW	Milk	SS	CWT	EMA	RIB	Rump	RBY	IMF
EBV	+3.1	+1.8	-3.0	+0.3	+11	+18	+27	+20	+9	+0.9	+13	+1.5	+0.4	+0.6	+0.3	+0.0
Acc	41%	35%	47%	70%	47%	47%	50%	49%	37%	36%	37%	30%	33%	32%	31%	29%

COMMENTS: Prospector is a Maharajah son that has a soft skin and good length of body. Maharajah had a wonderful temperament and excellent hair type. The calves are very correct with great depth of body, broad muzzles and good feet and legs. Positive carcass data on this bull.

PURCHASER

\$

GRAZAG

GRAZING AND AGRICULTURAL PRODUCTION SOLUTIONS

3 Local Independent Stores, offering an extensive range of products and services including Agronomy, Animal Health, Fertilizer, Feed and Fencing

Grazag – Armidale – ph.67703400, 12 Ampol St, Armidale

Grazag - Glen Innes – ph.6770 3430, 4-6 Wullamulla St, Glen Innes

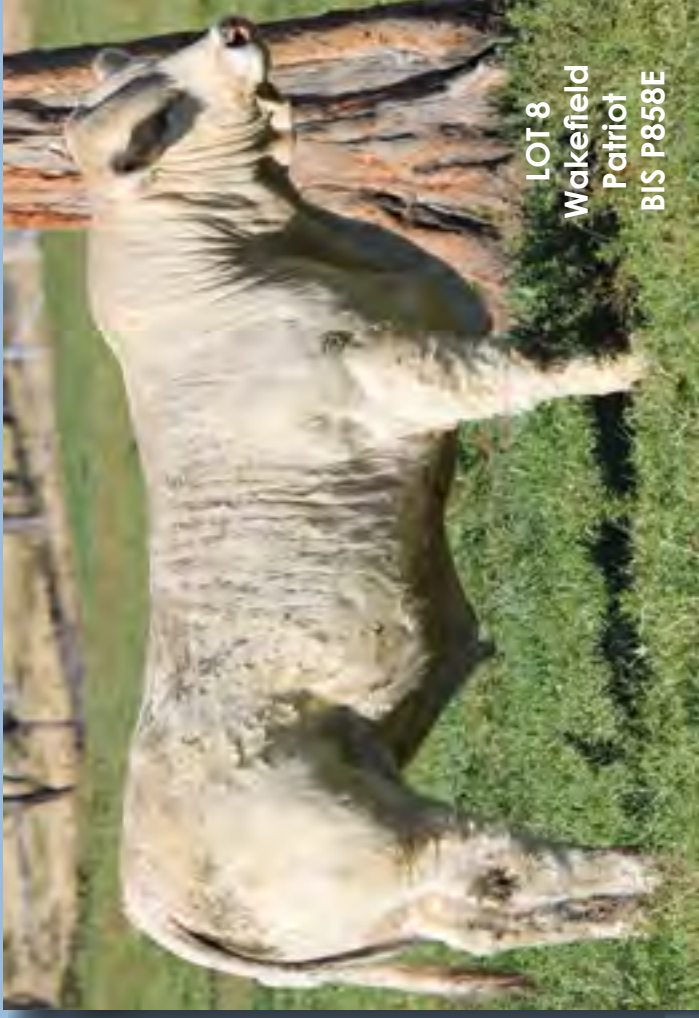
Grazag – Guyra – ph.6770 3420, 159-161 Bradley St, Guyra



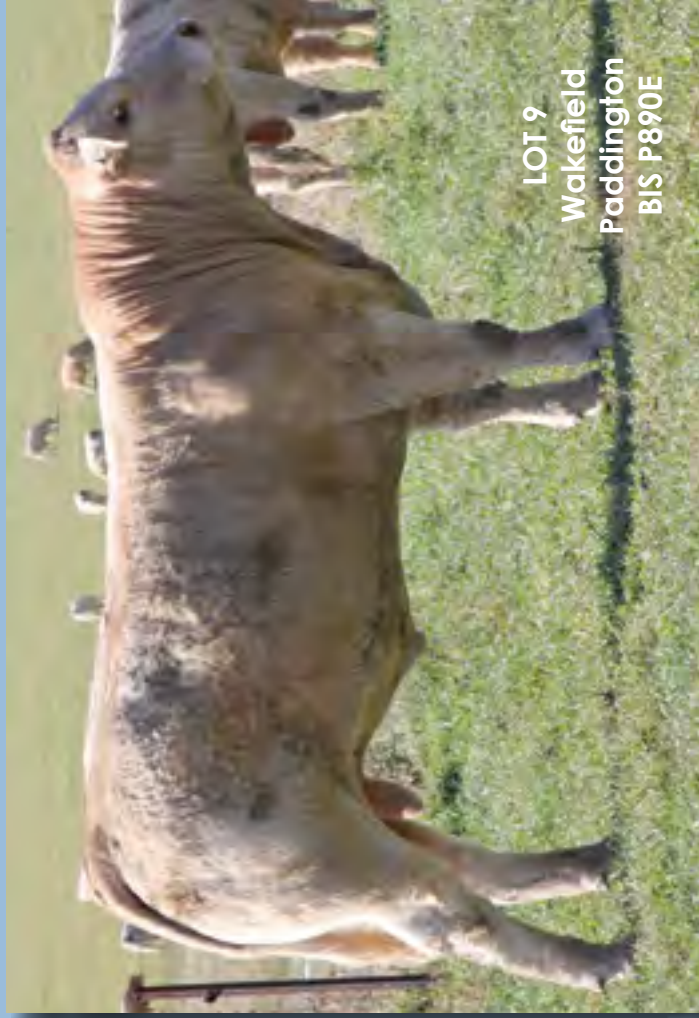
**We are open from 7.30 to 5pm Monday – Friday
Saturdays 8am – 12pm, Guyra-8.30am -12pm**



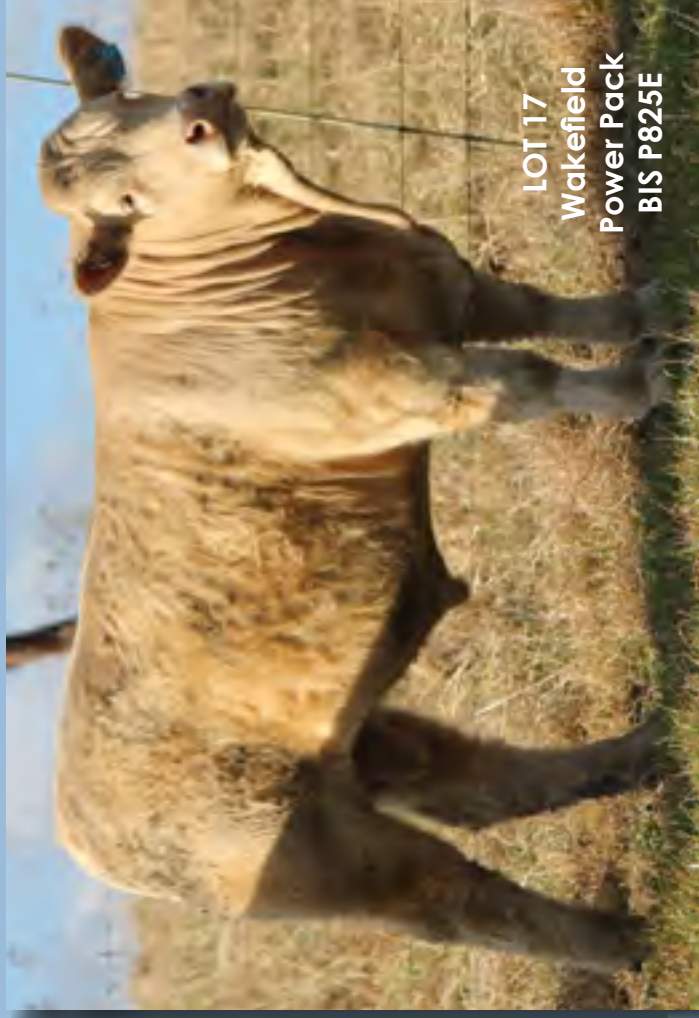
LOT 6
Wakefield
Prince of Thieves
BIS P767E



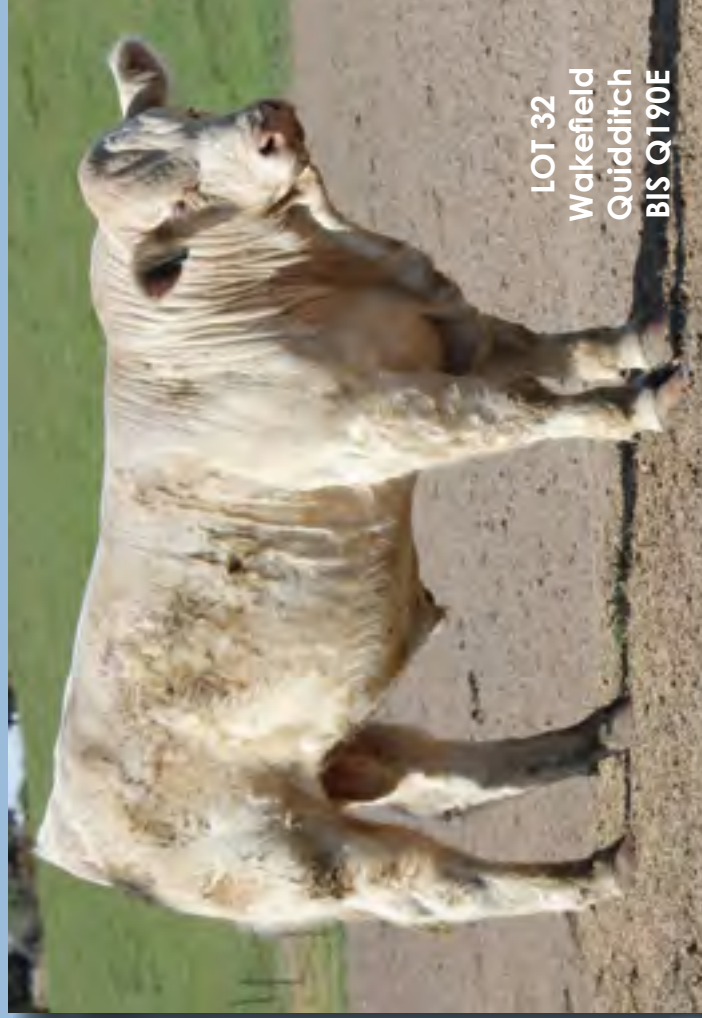
LOT 8
Wakefield
Patriot
BIS P858E



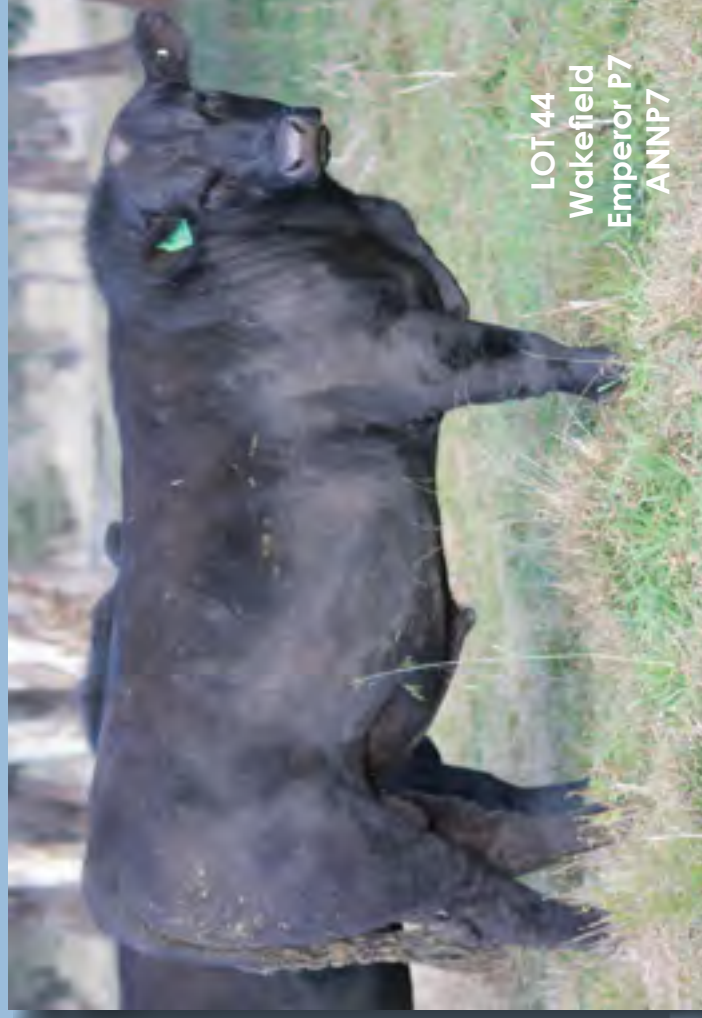
LOT 9
Wakefield
Paddington
BIS P890E



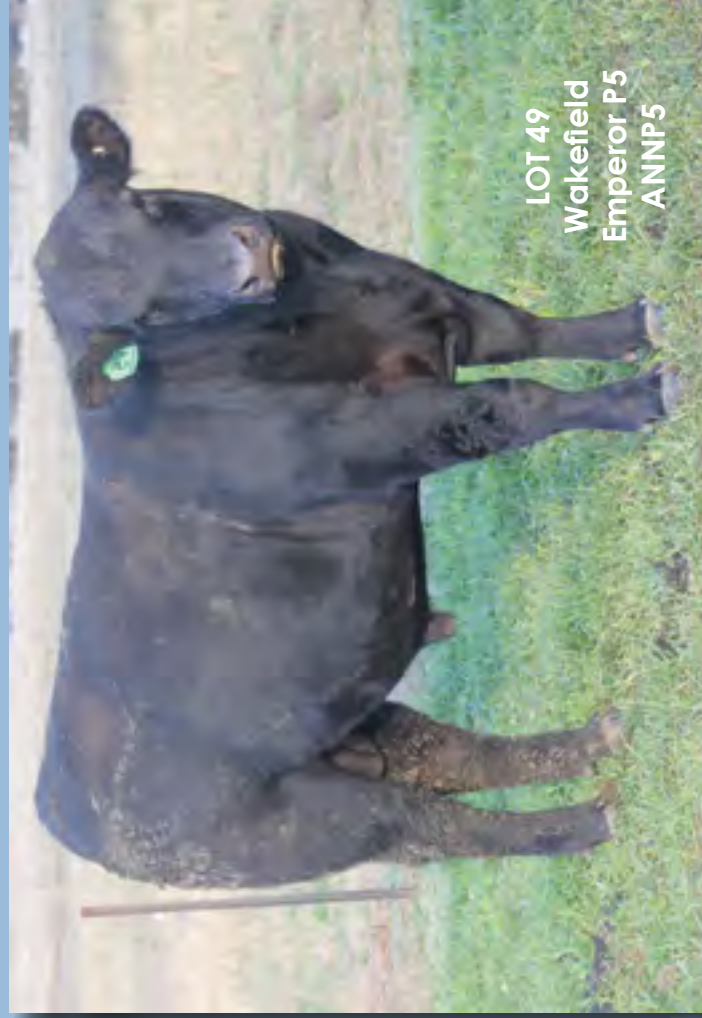
LOT 17
Wakefield
Power Pack
BIS P825E



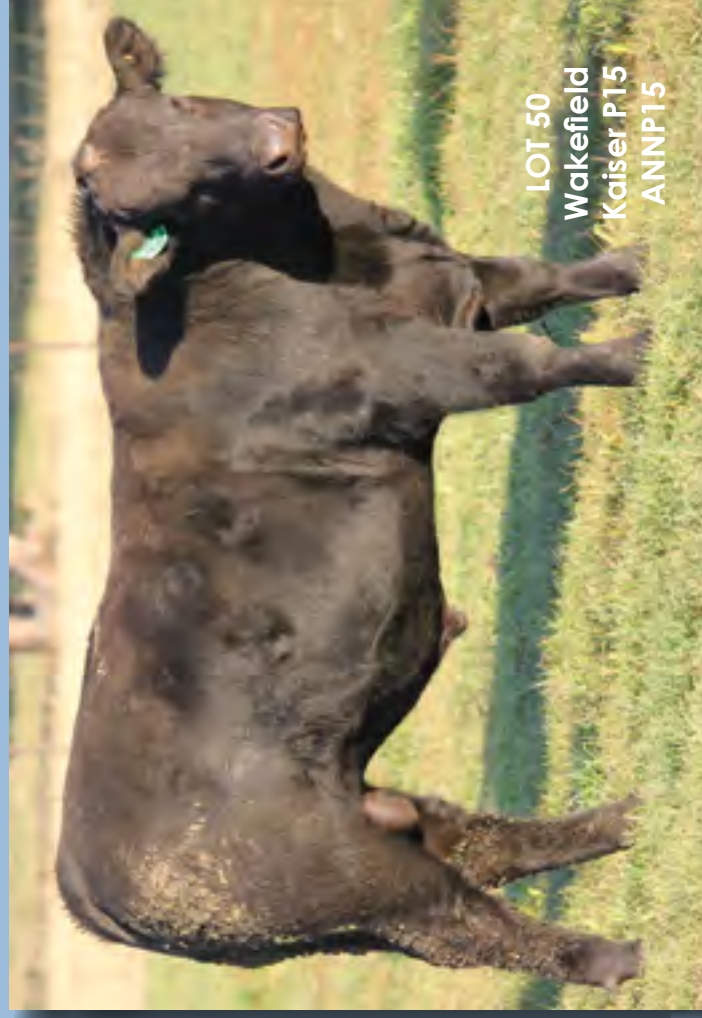
LOT 32
Wakefield
Quidditch
BIS Q190E



LOT 44
Wakefield
Emperor P7
ANNP7



LOT 49
Wakefield
Emperor P5
ANNP5



LOT 50
Wakefield
Kaiser P15
ANNP15

GETTING RESULTS



Happy Clients - Calves Sired by Wakefield Charolais Bulls



27

WAKEFIELD PLAYMAKER (P)

TATTOO: BIS P885E DOB: 22/09/2018 COLOUR: White

KEYS ALL STATE 149X M792787 (OAU F2787E) (P)

SIRE: WAKEFIELD LINE OUT (BIS L994E) (P)

AIRLIE FRIESIA G726E (A1S G726E) (P)

MERIT ROUNDUP 9508W PMC326558 (OAC E6558E) (P)

DAM: WAKEFIELD AMAZE 32 (BIS K844E) (P)

WAKEFIELD AMAZE 10 (BIS E445E)

KEYS SPECIALIST 18U M761126 (OAU -1126E) (P)

MISS KEY MEG 2T F1079615 (OAU -9615E) (P)

AIRLIE CARMELO (A1S C150F)

AIRLIE FRIESIA B735E (A1S B735E) (P)

MXS VERMILLION 527R MC299214 (OAC A9214E) (P)

MERIT YOLANDA 7244T PFC361301 (PED -1301E)

IJOUFFLU 6327351004 (OAF N6327F)

WAKEFIELD AMAZE 2 (BIS C129E) (P)

Index	\$Value
Dom\$	+\$14
Exp\$	+\$19
NTerm\$	+\$13



June 2020 Australasian Charolais BREEDPLAN Analysis

	CE Dir	CE Dtr	GL	BW	200	400	600	MCW	Milk	SS	CWT	EMA	RIB	Rump	RBY	IMF
EBV	-3.0	+0.6	-4.2	+0.2	+15	+25	+30	+24	+1	+2.3	+23	+1.6	-0.6	-1.0	+1.1	-0.6
Acc	42%	32%	50%	70%	48%	48%	50%	48%	36%	38%	36%	28%	32%	32%	30%	27%

COMMENTS: Playmaker is a meaty, polled bull with eye appeal and high growth. Top 20% for gestation length, top 5% for scrotal, top 10% for retail beef yield.

PURCHASER

\$

28

WAKEFIELD QUATTRO (AI) (ET) (P)

TATTOO: BIS Q201E DOB: 15/03/2019 COLOUR: White

ADVANCE XR8 (ADV X50E)

SIRE: WAKEFIELD LAMBORGHINI (BIS L935E)

GOBONGO REBBY W36E (GO W36E)

WAKEFIELD JUMBLE (BIS J526E) (P/S)

DAM: WAKEFIELD AUTUMN 15 (BIS L974E) (P)

WAKEFIELD AUTUMN 6 (BIS D348E) (P)

PALGROVE UPTURN (PK U353E)

ADVANCE GINA R/F (ADV T3E)

PALGROVE TRADER (PK T128E)

GOBONGO REBBY S106E (GO S106E)

ESPION (IAF E6034F)

WAKEFIELD BRILLIANT (BIS B958E)

INDIANA 0393112617 (OAF N393F)

WAKEFIELD AUTUMN (BIS A810E) (P)

Index	\$Value
Dom\$	+\$19
Exp\$	+\$25
NTerm\$	+\$20



June 2020 Australasian Charolais BREEDPLAN Analysis

	CE Dir	CE Dtr	GL	BW	200	400	600	MCW	Milk	SS	CWT	EMA	RIB	Rump	RBY	IMF
EBV	-2.1	-0.4	-3.1	+1.2	+16	+30	+41	+51	+6	+0.8	+24	+2.4	-0.1	-0.3	+1.0	-0.1
Acc	36%	31%	39%	53%	42%	44%	46%	42%	35%	44%	37%	31%	33%	33%	32%	30%

COMMENTS: What an outstanding polled young bull. Quattro has exceptional body length and a smooth muscle pattern with smooth shoulder set and great neck extension. He has a bomb proof temperament and loves a scratch. The Lamborghini sons are impressing us with their softness, correct structure and amazing growth with tonnes of eye appeal. His dam Autumn 15 is a favourite here at Wakefield. She has produced thick, powerful bull and feminine fertile females. Jen's favourite! Top 15% for EMA and RBY and top 20% for 200 day growth.

PURCHASER

\$

29

WAKEFIELD QUITE A RIPPER (AI) (ET) (P)

TATTOO: BIS Q202E DOB: 14/03/2019 COLOUR: White

FERNVALE NERO (FEN N4E)

SIRE: FERNVALE RIPPER (FEN R1E)

BOTTLE TREE CYNTHIA (SPA C2D)

WAKEFIELD JUMBLE (BIS J526E) (P/S)

DAM: WAKEFIELD AUTUMN 15 (BIS L974E) (P)

WAKEFIELD AUTUMN 6 (BIS D348E) (P)

FERNVALE KAFF (FEN K45E) (P)

FERNVALE KOOL KATE (FEN K6E) (P)

LONGVIEW NELSON (93 N5)

ROWEENA PEGGY (RD P23C) (P)

ESPION (IAF E6034F)

WAKEFIELD BRILLIANT (BIS B958E)

INDIANA 0393112617 (OAF N393F)

WAKEFIELD AUTUMN (BIS A810E) (P)

Index	\$Value
Dom\$	+\$14
Exp\$	+\$24
NTerm\$	+\$21



June 2020 Australasian Charolais BREEDPLAN Analysis

	CE Dir	CE Dtr	GL	BW	200	400	600	MCW	Milk	SS	CWT	EMA	RIB	Rump	RBY	IMF
EBV	-4.1	-2.7	-2.6	+1.7	+17	+32	+50	+50	+3	+1.3	+27	+1.8	-0.2	-0.4	+0.9	-0.2
Acc	47%	43%	51%	66%	53%	53%	55%	53%	49%	46%	46%	37%	39%	38%	38%	36%

COMMENTS: Another exceptional young ET calf by a blast from the past in Fernvale Ripper. Quite A Ripper is polled with a tremendous top line and plenty of punch. He has tremendous growth figures and is very easy on the eye! Ripper produced many show winning sons and has been used widely in Charolais herds across Australia his semen is no longer available. Top 10% for 600 day growth and top 15% for 200 and 400 day growth and carcase weight and RBY.

PURCHASER

\$

30

WAKEFIELD QUITE A CATCH (P) (R/F)

TATTOO: BIS Q203E DOB: 23/04/2019 COLOUR: Red factor

MNE GOLDEN EAGLE 25W PMC 85384 (OAC G25E) (P/S)

SIRE: WAKEFIELD MAHARAJAH (BIS M179E) (P)

GOBONGO REBBY D213E (GO D213E) (P)

IJOUFFLU 6327351004 (OAF N6327F)

DAM: WAKEFIELD AMAZE 9 (BIS E435E)

WAKEFIELD AMAZE 2 (BIS C129E) (P)

CHARDEL FALCON 503T MC63913 (OAC -503E)

EFH MISS T 10S FC81112 (PED -811E)

HARVIE JAGER 65J PMC228759 (OAC U8759E) (P)

GOBONGO REBBY W100E (GO W100E)

DIEGO RR3 1888102991 (PED X2991F)

GIROLLE 6391101387 (PED -1387F)

LHD MR PERFECT Y416 M 314744 (OAC J416E) (P)

WAKEFIELD AMAZE (BIS A820E)

Index	\$Value
Dom\$	+\$5
Exp\$	+\$7
NTerm\$	+\$14



June 2020 Australasian Charolais BREEDPLAN Analysis

	CE Dir	CE Dtr	GL	BW	200	400	600	MCW	Milk	SS	CWT	EMA	RIB	Rump	RBY	IMF
EBV	-1.4	-3.6	-1.0	+1.8	+14	+20	+31	+23	+4	+0.5	+15	+1.5	-0.7	-0.9	+1.2	-0.4
Acc	46%	42%	51%	70%	50%	50%	52%	51%	46%	41%	41%	34%	37%	37%	36%	33%

COMMENTS: An outstanding young polled Maharajah son out of the Wakefield Amaze 9 cow. Her other son sells as Lot 1 today. Quite A Catch is just that. He is very correct, soft and has great depth and length of body on a good frame. Did I mention his great temperament! This young bull would suit many enterprises from vealer production to feedlot steers. Top 10% for Retail beef yield.

PURCHASER

\$

31

WAKEFIELD POKERGAME (AI)(ET)(P)

TATTOO: BIS P929E DOB: 2/11/2018 COLOUR: White

GERRARD PASTOR 35Z MC347921 (OAC H7921E) (P)

SIRE: ELDER'S BLACKJACK 788B M358621 (OAC K788E)(P)

SVY STARTSTRUCK 8X FC382684 (OAC F8E) (P)

HARVIE MOJO 115M QSMC272453 (P/S) (R/F)

DAM: WAKEFIELD ACE 8 (BIS K849E) (AI) (ET) (R/F)

WAKEFIELD ACE (AI) (ET)

GERRARD PREACHER 31U MC319989 (OACD9989E)(P)

GERRARD ROXANNE 18P PFC344620 (PED -4620E)

SVY AD INVINCIBLE P 748T PMC309953 (PEDC748E)(P)

SVY STARSTUCK 559R (PED A559E) (P)

HARVIE JAGER 65J PMC228759 (P)

HARVIE MISS GELLIA 35G (P)

SILVERSTREAM JONAH J91F

MOUNT WILLIAM V92E

Index	\$Value
Dom\$	+\$30
Exp\$	+\$46
NTerm\$	+\$26



Expected Average Progeny Value - July 2020

	CE Dir	CE Dtr	GL	BW	200	400	600	MCW	Milk	SS	CWT	EMA	RIB	Rump	RBY	IMF
EBV	-2.5	-1.0	-3.1	+1.0	+19	+37	+55	+54	+7	+2.0	+31	+2.0	+1.1	+1.1	-0.2	+0.3

COMMENTS: Pokergame is a polled ET son from Canadian sire Elder's Blackjack out of the magnificent Ace K849 cow. He is thick with plenty of growth and finishing ability.

PURCHASER

\$

32

WAKEFIELD QUIDDITCH (AI) (P)

TATTOO: BIS Q190E DOB: 13/03/2019 COLOUR: White

GERRARD PASTOR 35Z MC347921 (OAC H7921E) (P)

SIRE: ELDER'S BLACKJACK 788B M358621 (OAC K788E)(P)

SVY STARTSTRUCK 8X FC382684 (OAC F8E) (P)

RANGAN PARK REDEMPTION E42 (RAN E42E) (P)

DAM: WAKEFIELD AMAZE 22 (BIS J549E) (P)

WAKEFIELD AMAZE 10 (BIS E445E)

GERRARD PREACHER 31U MC319989 (OAC D9989E)(P)

GERRARD ROXANNE 18P PFC344620 (PED -4620E)

SVY AD INVINCIBLE P 748T PMC309953 (PEDC748E)(P)

SVY STARSTUCK 559R (PED A559E) (P)

HARVIE REDEMPTION 36P MC286641 (OAC Z6641E)(P)

RANGAN PARK SHOWGIRL C7 (RAN C7E)

IJOUFFLU 6327351004 (OAF N6327F)

WAKEFIELD AMAZE 2 (BIS C129E) (P)

Index	\$Value
Dom\$	+\$16
Exp\$	+\$25
NTerm\$	+\$20



June 2020 Australasian Charolais BREEDPLAN Analysis

	CE Dir	CE Dtr	GL	BW	200	400	600	MCW	Milk	SS	CWT	EMA	RIB	Rump	RBY	IMF
EBV	-9.3	-3.8	-2.0	+1.5	+22	+41	+58	+58	+5	+0.9	+33	+2.3	+0.8	+0.7	+0.1	+0.2
Acc	42%	34%	72%	70%	52%	51%	52%	49%	36%	43%	39%	29%	30%	29%	29%	27%

COMMENTS: Quidditch is by Canadian sire Elder's Blackjack and his dam Amaze 22 J549 is a another exceptional daughter out of the Amaze 10 cow, dam of the Supreme Exhibit at the Charolais National 2019 and winner of Supreme Female at the EKKA 2019. This young polled bull has tremendous growth and carcass traits and you would not get tired of looking at him in your front paddock. Top 5% for 200, 400 and 600 day growth and top 20% for EMA.

PURCHASER

\$

33

WAKEFIELD QUARTERMASTER (AI) (P)

TATTOO: BIS Q187E DOB: 12/03/2019 COLOUR: White

GERRARD PASTOR 35Z MC347921 (OAC H7921E) (P)

SIRE: ELDER'S BLACKJACK 788B M358621 (OAC K788E)(P)

SVY STARTSTRUCK 8X FC382684 (OAC F8E) (P)

PINAY 8552394134 (OAF U4134F)

DAM: WAKEFIELD MAXINE 14 (BIS J607E) (P)

WAKEFIELD MAXINE 8 (BIS F765E) (P)

GERRARD PREACHER 31U MC319989 (OAC D9989E)(P)

GERRARD ROXANNE 18P PFC344620 (PED -4620E)

SVY AD INVINCIBLE P 748T PMC309953 (PEDC748E)(P)

SVY STARSTUCK 559R (PED A559E) (P)

IMPAIR 1893102983 (OAF N189F)

MARY 8596100049 (OAF R8596F)

VIOLET HILLS BARCLAY (VHV B24E) (P)

WAKEFIELD MAXINE 2 (BIS C175E)

Index	\$Value
Dom\$	+\$22
Exp\$	+\$35
NTerm\$	+\$22



June 2020 Australasian Charolais BREEDPLAN Analysis

	CE Dir	CE Dtr	GL	BW	200	400	600	MCW	Milk	SS	CWT	EMA	RIB	Rump	RBY	IMF
EBV	-4.8	+3.8	-3.2	+1.4	+17	+32	+51	+57	+6	+1.0	+29	+2.6	+0.8	+0.5	+0.3	+0.2
Acc	42%	34%	73%	70%	53%	52%	53%	50%	37%	43%	41%	31%	33%	32%	32%	30%

COMMENTS: Quartermaster has plenty of punch and presence from his French and Canadian bloodlines. He is a polled, free moving young bull that is worth considering. Top 10% for 600 day growth, carcass weight and EMA and top 20% for 200 and 400 day growth.

PURCHASER

\$

34

WAKEFIELD QUICKBEQUICK (P)

TATTOO: BIS Q206E DOB: 14/06/2019 COLOUR: Cream

MNE GOLDEN EAGLE 25W PMC 85384 (OAC G25E) (P/S)

SIRE: WAKEFIELD MAHARAJAH (BIS M179E) (P)

GOBONGO REBBY D213E (GO D213E) (P)

IJOUFFLU 6327351004 (OAF N6327F)

DAM: WAKEFIELD AMAZE 10 (BIS E445E)

WAKEFIELD AMAZE 2 (BIS C129E) (P)

CHARDEL FALCON 503T MC63913 (OAC -503E)

EFH MISS T 10S FC81112 (PED -811E)

HARVIE JAGER 65J PMC228759 (OAC U8759E) (P)

GOBONGO REBBY W100E (GO W100E)

DIEGO RR3 1888102991 (PED X2991F)

GIROLLE 6391101387 (PED -1387F)

LHD MR PERFECT Y416 M 314744 (OAC J416E) (P)

WAKEFIELD AMAZE (BIS A820E)

Index	\$Value
Dom\$	+\$13
Exp\$	+\$17
NTerm\$	+\$13



Expected Average Progeny Value - July 2020

	CE Dir	CE Dtr	GL	BW	200	400	600	MCW	Milk	SS	CWT	EMA	RIB	Rump	RBY	IMF
EBV	+0.7	+0.4	-1.9	+0.6	+13	+17	+25	+17	+6	+0.9	+13	+1.4	-0.5	-0.5	+0.8	-0.3

COMMENTS: Quickbequick is a polled Maharajah son that has good growth, plenty of body length and a good temperament. This bull is the youngest bull on offer today. Quickbequick is bred in the purple with top shelf genetics on offer here. His Dam Amaze 10 is the dam of the Supreme Champion Exhibit at the Charolais National 2019 and Supreme Interbred Female at the EKKA in the same year. She keeps producing amazing progeny like Quickbequick!

PURCHASER

\$

35

WAKEFIELD QUILL (AI)

TATTOO: BIS Q168E DOB: 02/03/2019 COLOUR: White

ADVANCE XR8 (ADV X50E)

SIRE: WAKEFIELD LAMBORGHINI (BIS L935E)

GOBONGO REBBY W36E (GO W36E)

MERIT ROUNDUP 9508W PMC326558 (OAC E6558E) (P)

DAM: WAKEFIELD LIBERTY 2 (BIS K848E) (P)

WAKEFIELD LIBERTY (BIS H390E)

PALGROVE UPTURN (PK U353E)

ADVANCE GINA R/F (ADV T3E)

PALGROVE TRADER (PK T128E)

GOBONGO REBBY S106E (GO S106E)

MXS VERMILLION 527R MC299214 (OAC A9214E) (P)

MERIT YOLANDA 7244T PFC361301 (PED -1301E)

GUNNADOO VOODOO V163E (GN1 V163E)

HARLEYWOOD R13E (WEA R13E)

Index	\$Value
Dom\$	+\$35
Exp\$	+\$48
NTerm\$	+\$22



June 2020 Australasian Charolais BREEDPLAN Analysis

	CE Dir	CE Dtr	GL	BW	200	400	600	MCW	Milk	SS	CWT	EMA	RIB	Rump	RBY	IMF
EBV	+5.2	+5.7	-5.9	-0.3	+14	+27	+34	+37	+5	+2.4	+21	+1.1	-0.4	-0.6	+0.7	-0.3
Acc	37%	32%	68%	68%	48%	49%	51%	48%	38%	45%	39%	31%	34%	33%	33%	31%

COMMENTS: Quill is a Lamborghini son with good growth and body length. Top 5% for gestation length and scrotal size and top 15% for calving ease on daughters and top 20% for domestic index.

PURCHASER

\$

36

WAKEFIELD PLUTO (P)

TATTOO: BIS P843E DOB: 02/09/2018 COLOUR: White

LT LEDGER 0332 M791626 (OAU F3168E) (P)

SIRE: WAKEFIELD LORAX (BIS L982E) (P)

AIRLIE FRIESIA G726E (A1S G726E) (P)

PCC SUDDEN IMPACT 848U PEMC321017 (OAC D1017E) (P)

DAM: WAKEFIELD ACE 13 (BIS M108E)

WAKEFIELD ACE (BIS A862E)

LT BLUEGRASS 4017P M686569 (OAU Z4017E) (P)

LT BRENDA 6120 PLD F1046992 (PED -6992E)

AIRLIE CARMELO (A1S C150F)

AIRLIE FRIESIA B735E (A1S B735E) (P)

MVX COUGARHILL HANK 720G MC200052 (PED -52E)

SPARROWS TEMPEST 174K PFC290732 (PED -732E) (P)

SILVERSTREAM JONAH J91F 83/FF12682/94 (83 J91F)

MOUNT WILLIAM V92E (BS V92E)

Index	\$Value
Dom\$	+\$32
Exp\$	+\$45
NTerm\$	+\$19



June 2020 Australasian Charolais BREEDPLAN Analysis

	CE Dir	CE Dtr	GL	BW	200	400	600	MCW	Milk	SS	CWT	EMA	RIB	Rump	RBY	IMF
EBV	+2.3	+3.8	-2.9	-0.5	+10	+22	+29	+21	+8	+2.0	+20	+1.9	+0.8	+1.1	-0.2	+0.4
Acc	43%	35%	46%	70%	48%	48%	50%	49%	38%	38%	37%	30%	34%	34%	32%	30%

COMMENTS: Pluto is a polled Lorax son that has plenty of punch, good body length and growth. Top 10% for scrotal size.

PURCHASER

\$

37

WAKEFIELD PAPRIKA (P) (R/F)

TATTOO: BIS P955E DOB: 05/12/2018 COLOUR: Red factor

WAKEFIELD JACK FLASH (BIS J635E) (P)

SIRE: WAKEFIELD MATTEROFFACT (BIS M210E) (P)

WAKEFIELD EDEN 2 (BIS H264E) (P)

PINAY 8552394134 (OAF U4134F)

DAM: WAKEFIELD BOLERO 4 (BIS K815E) (P)

WAKEFIELD BOLERO (BIS B947D) (P)

RANGAN PARK REDEMPTION E42 (RAN E42E) (P)

WAKEFIELD ACE (BIS A862E)

WAKEFIELD EXHILARATE (BIS E474E)

WAKEFIELD EDEN (BIS E414E) (P)

IMPAIR 1893102983 (OAF N189F)

MARY 8596100049 (OAF R8596F)

LT WYOMING WIND 4020 PLD M411450 (OAU4020E)(P)

WAKEFIELD ZOE (BIS Z739C) (P)

Index	\$Value
Dom\$	+\$23
Exp\$	+\$28
NTerm\$	+\$17



June 2020 Australasian Charolais BREEDPLAN Analysis

	CE Dir	CE Dtr	GL	BW	200	400	600	MCW	Milk	SS	CWT	EMA	RIB	Rump	RBY	IMF
EBV	-1.7	+2.5	-2.1	+0.4	+12	+25	+34	+33	+10	+0.2	+24	+2.8	+0.3	+0.2	+0.4	+0.5
Acc	40%	35%	55%	67%	47%	47%	49%	48%	36%	37%	37%	31%	33%	33%	32%	31%

COMMENTS: Paprika is a polled red factor bull by a very stylish home bred bull in Matteroffact. He is slick coated, free moving with plenty of stretch. His dam Bolero 4, has good milk and is very correct, producing calves with eye appeal and plenty of muscle from the French sire Pinay in her line. Top 10% for EMA and top 20% for milk and IMF.

PURCHASER

\$

38

WAKEFIELD PICKLED PEPPER (P) (R/F)

TATTOO: BIS P845E DOB: 02/09/2018 COLOUR: Red factor

LT LEDGER 0332 M791626 (OAU F3168E) (P)

SIRE: WAKEFIELD LORAX (BIS L982E) (P)

AIRLIE FRIESIA G726E (A1S G726E) (P)

WAKEFIELD JACK FLASH (BIS J635E) (P)

DAM: WAKEFIELD HARMONY 3 (BIS M218E) (P)

WAKEFIELD HARMONY (BIS H288E) (P)

LT BLUEGRASS 4017P M686569 (OAU Z4017E) (P)

LT BRENDA 6120 PLD F1046992 (PED -6992E)

AIRLIE CARMELO (A1S C150F)

AIRLIE FRIESIA B735E (A1S B735E) (P)

RANGAN PARK REDEMPTION E42 (RAN E42E) (P)

WAKEFIELD ACE (BIS A862E)

PINAY 8552394134 (OAF U4134F)

WAKEFIELD ANNA (BIS A802E) (P)

Index	\$Value
Dom\$	+\$31
Exp\$	+\$42
NTerm\$	+\$22



June 2020 Australasian Charolais BREEDPLAN Analysis

	CE Dir	CE Dtr	GL	BW	200	400	600	MCW	Milk	SS	CWT	EMA	RIB	Rump	RBY	IMF
EBV	+1.5	+3.0	-2.0	+0.5	+13	+28	+38	+35	+6	+1.3	+25	+2.2	+0.2	+0.3	+0.3	+0.4
Acc	42%	34%	50%	70%	47%	47%	49%	48%	35%	36%	36%	29%	32%	32%	31%	29%

COMMENTS: Pickled Pepper is another Lorax son that has good carcass and calving traits. He has plenty of muscle from his Jack Flash and Pinay combination in his pedigree. He is a polled red factor bull that would suit any beef operation. Top 20% for EMA.

PURCHASER

\$

39

WAKEFIELD PHOENIX (P) (R/F)

TATTOO: BIS P824E DOB: 20/08/2018 COLOUR: Red factor

MNE GOLDEN EAGLE 25W PMC 85384 (OAC G25E) (P/S)

SIRE: WAKEFIELD MAHARAJAH (BIS M179E) (P)

GOBONGO REBBY D213E (GO D213E) (P)

WAKEFIELD HORNBLOWER (BIS H203E) (P)

DAM: WAKEFIELD ASCOT 29 (BIS K819E) (P)

WAKEFIELD ASCOT 7 (BIS D346E) (P)

CHARDEL FALCON 503T MC63913 (OAC -503E)

EFH MISS T 10S FC81112 (PED -811E)

HARVIE JAGER 65J PMC228759 (OAC U8759E) (P)

GOBONGO REBBY W100E (GO W100E)

PINAY 8552394134 (OAF U4134F)

WAKEFIELD AMAZE 3 (BIS C154E) (P)

NELSON 397108304 (OAF S8304F)

WAKEFIELD ASCOT (BIS A854D) (P)

Index	\$Value
Dom\$	+\$19
Exp\$	+\$28
NTerm\$	+\$21



June 2020 Australasian Charolais BREEDPLAN Analysis

	CE Dir	CE Dtr	GL	BW	200	400	600	MCW	Milk	SS	CWT	EMA	RIB	Rump	RBY	IMF
EBV	-1.6	-0.8	-3.7	+1.7	+16	+29	+44	+45	+6	+1.3	+21	+1.9	+0.2	+0.3	+0.4	+0.1
Acc	41%	36%	46%	70%	48%	48%	50%	49%	39%	36%	37%	30%	33%	33%	32%	29%

COMMENTS: Phoenix is a polled red factor bull by Maharajah. He has plenty of growth, muscle and a soft hair type with good body length. Top 20% for 200 and 600 day growth.

PURCHASER

\$

40

WAKEFIELD PLATINUM

TATTOO: BIS P819E DOB: 14/08/2018 COLOUR: White

MNE GOLDEN EAGLE 25W PMC 85384 (OAC G25E) (P/S)

SIRE: WAKEFIELD MAHARAJAH (BIS M179E) (P)

GOBONGO REBBY D213E (GO D213E) (P)

WAKEFIELD HOTSTUFF (BIS H287E) (P)

DAM: WAKEFIELD FLEUR 3 (BIS L912E) (P)

WAKEFIELD FLEUR 2 (BIS H267E)

CHARDEL FALCON 503T MC63913 (OAC -503E)

EFH MISS T 10S FC81112 (PED -811E)

HARVIE JAGER 65J PMC228759 (OAC U8759E) (P)

GOBONGO REBBY W100E (GO W100E)

PINAY 8552394134 (OAF U4134F)

WAKEFIELD FOXY LADY (BIS F748E) (P)

WAKEFIELD FUDGE (BIS F776E) (P)

WAKEFIELD FLEUR (BIS F772E) (P)

Index	\$Value
Dom\$	+\$31
Exp\$	+\$46
NTerm\$	+\$24



June 2020 Australasian Charolais BREEDPLAN Analysis

	CE Dir	CE Dtr	GL	BW	200	400	600	MCW	Milk	SS	CWT	EMA	RIB	Rump	RBY	IMF
EBV	+3.5	+4.8	-2.9	+0.3	+13	+24	+38	+24	+9	+1.8	+20	+1.8	+0.1	+0.2	+0.5	+0.1
Acc	39%	34%	44%	70%	47%	47%	49%	48%	36%	36%	37%	30%	32%	32%	31%	29%

COMMENTS: Platinum is another bull by Maharajah. He has plenty of growth, muscle and the soft skin that the Maharajah progeny are exhibiting. He will suit many beef enterprises from vealer to feedlot steers. Top 15% for calving ease daughters and scrotal.

PURCHASER

\$

41

WAKEFIELD PADLOCK (P) (R/F)

TATTOO: BIS P913E DOB: 08/10/2018 COLOUR: Red factor

MNE GOLDEN EAGLE 25W PMC 85384 (OAC G25E) (P/S)

SIRE: WAKEFIELD MAHARAJAH (BIS M179E) (P)

GOBONGO REBBY D213E (GO D213E) (P)

WAKEFIELD HOTSTUFF (BIS H287E) (P)

DAM: WAKEFIELD ASCOT 32 (BIS L901E) (P)

WAKEFIELD ASCOT 20 (BIS H217E) (P)

CHARDEL FALCON 503T MC63913 (OAC -503E)

EFH MISS T 10S FC81112 (PED -811E)

HARVIE JAGER 65J PMC228759 (OAC U8759E) (P)

GOBONGO REBBY W100E (GO W100E)

PINAY 8552394134 (OAF U4134F)

WAKEFIELD FOXY LADY (BIS F748E) (P)

SVY FREEDOM PLD 307N PMC280878 (OAC Y2808E)(P)

WAKEFIELD ASCOT 7 (BIS D346E) (P)

Index	\$Value
Dom\$	+\$25
Exp\$	+\$38
NTerm\$	+\$21



June 2020 Australasian Charolais BREEDPLAN Analysis

	CE Dir	CE Dtr	GL	BW	200	400	600	MCW	Milk	SS	CWT	EMA	RIB	Rump	RBY	IMF
EBV	+0.7	+2.3	-3.9	+1.1	+13	+25	+39	+32	+6	+1.9	+18	+1.8	+0.4	+0.6	+0.3	+0.1
Acc	40%	35%	46%	70%	47%	47%	50%	49%	37%	37%	37%	30%	33%	33%	32%	29%

COMMENTS: The Maharajah progeny are growthy with a lovely soft skin and hair type. This young bull is no exception, Padlock has a soft skin and a smooth muscle pattern. He has a positive set of carcass data, above average growth and stands on good feet and legs. Top 5% for EMA and top 10% retail beef yield.

PURCHASER

\$

SILVERSTREAM EVOLUTION E168 083090168E (OAN E168E) (P) SILVERSTREAM BRUMBY B89 083060089E (OANB89E)(P)
SIRE: PALGROVE JUNCTION (PK J680E) (P/S) SILVERSTREAM GLOSSY S120 083010120G (OAN W120E)
 PALGROVE ESTELLA 269 (PK C1182E) (P) AIRLIE YALLTA (A1S Y264E)
 JWX SILVER BULLET 524W PMC325757 (OAC E5757E) (P) PALGROVE ESTELLA 173 (PK Y116E) (P)
DAM: WAKEFIELD JEDDA (BIS J634E) (P) BAR J SILVERADO 14S PMC306605 (PED -6605E)
 MOUNT WILLIAM V92E (BS V92E) KMAC MISS MARMALADE 31R PFC343445 (PED -3445E)
 TALGOONA QANTAS (CG Q4E)
 MOUNT WILLIAM SYBIL (BS S72E)

Index	\$Value
Dom\$	+\$18
Exp\$	+\$29
NTerm\$	+\$17



June 2020 Australasian Charolais BREEDPLAN Analysis

	CE Dir	CE Dtr	GL	BW	200	400	600	MCW	Milk	SS	CWT	EMA	RIB	Rump	RBY	IMF
EBV	+3.3	+2.9	-2.5	+1.3	+13	+20	+31	+37	-1	+0.9	+16	+0.4	-0.3	-0.5	+0.4	-0.3
Acc	43%	38%	75%	70%	55%	54%	55%	53%	44%	51%	45%	38%	40%	39%	39%	37%

COMMENTS: The last Charolais bull for sale today. Perfecto is a red factor son by Palgrove Junction, he has good calving figures and growth.

PURCHASER _____

\$ _____

CASTLEREAGH ARTIFICIAL BREEDERS

"Advancing Livestock Genetics in Northern NSW"

Artificial Insemination Programs & Equipment

Liquid Nitrogen Sales & Delivery

Bull Semen Collection, Sales & Storage

Contact: Margaret Shedden

Phone: 0408 498 922

info@castlereaghab.com.au

www.castlereaghab.com.au



ARMITAGE & BUCKLEY

Servicing Armidale and the New England area since

Experts in the sale of cattle, sheep, goats, pigs, poultry, furniture and farm equipment.

Specialising in all facets of livestock sales and marketing.

At Armitage & Buckley, we have an expert team of experience and qualified livestock marketing specialists, eager to market your livestock to your best possible advantage. We can advise you on the best method of marketing your livestock in order to achieve the optimum return for your stock.

We are a young vibrant team, employing local people, to service local people. We are very conscious of supporting the community that supports us, and pride ourselves on the high level of service we provide.

***Weekly Sheep and Cattle Sales; Auctionsplus Assessors; EU Audits;
On Farm Assessment and Advice; Bull Sales; Ram Sales;
Clearance Sales & Rural Property Sales***



Tom Piddington and Luke Heagney – Principals

ARMITAGE & BUCKLEY

Office: 02 67721255

Fax: 02 67728146

Luke Heagney – 0459 044447 - luke@armitagebuckley.com.au

Tom Piddington – 0429 525797 - tom@armitagebuckley.com.au

Margie Jones – 0447 014442 - admin@armitagebuckley.com.au



43

WAKEFIELD EMPEROR P4#

IDENT: ANNP4 DOB: 23/03/2018 HERDBOOK: HBR

TE MANIA BERKLEY B1VTMB1^{SV}
SIRE: TE MANIA EMPEROR E343 VTME343^{PV}
 TE MANIA LOWAN Z74 VTMZ74^{PV}
 WAKEFIELD INFINITY F856 ANNF856^{SV}
DAM: WAKEFIELD VICKY H325 ANNH325^{SV}
 WAKEFIELD VICKY F863 ANNF863#

TE MANIA YORKSHIRE Y437 VTMV437^{PV}
 TE MANIA LOWAN Z53 VTMZ53#
 B T ULTRAVOX 297E USA297E#
 TE MANIA LOWAN V201 VTMV201#
 TE MANIA INFINITY 04 379 AB NZE04379#
 THE GRANGE RITA 2811 B238 WFOB238^{SV}
 GLENCAIRN MAXIMUS W36 DLGW36^{PV}
 GLENCAIRN VICKY V63 DLGV63#

Index	\$Value
Breeding	\$109
Domestic	\$104
Heavy Grain	\$116
Heavy Grass	\$106

July 2020 TransTasman Angus Cattle Evaluation

	CE Dir	CE Dtr	GL	BW	200	400	600	MCW	Milk	SS	CWT	EMA	RIB	Rump	RBY	IMF
EBV	+2.6	+4.2	-4.2	+4.2	+43	+79	+104	+93	+14	+1.5	+59	+4.3	+0.4	-0.4	-0.3	+2.2
Acc	60%	57%	64%	72%	64%	63%	64%	63%	60%	60%	61%	60%	63%	61%	62%	60%

Genetic Conditions: AMFU,CAFU,DDFU,NHFU

COMMENTS: A very good bull with plenty of meat to start the Angus today. He is by one of the most used AI sires in Australia in Te Mania Emperor E343. This bull has a good finishing ability on a good frame. He is free moving and has very good weight for age. His dam Vicky H325 is a donor in the Wakefield herd that has been producing exceptional progeny with plenty of style and thickness. He is a slick coated bull with good depth of body and a good top line.

PURCHASER

\$

44

WAKEFIELD EMPEROR P7#

IDENT: ANNP7 DOB: 26/03/2018 HERDBOOK: HBR

TE MANIA BERKLEY B1VTMB1^{SV}
SIRE: TE MANIA EMPEROR E343 VTME343^{PV}
 TE MANIA LOWAN Z74 VTMZ74^{PV}
 WAKEFIELD INFINITY F856 ANNF856^{SV}
DAM: WAKEFIELD VICKY H325 ANNH325^{SV}
 WAKEFIELD VICKY F863 ANNF863#

TE MANIA YORKSHIRE Y437 VTMV437^{PV}
 TE MANIA LOWAN Z53 VTMZ53#
 B T ULTRAVOX 297E USA297E#
 TE MANIA LOWAN V201 VTMV201#
 TE MANIA INFINITY 04 379 AB NZE04379#
 THE GRANGE RITA 2811 B238 WFOB238^{SV}
 GLENCAIRN MAXIMUS W36 DLGW36^{PV}
 GLENCAIRN VICKY V63 DLGV63#

Index	\$Value
Breeding	\$109
Domestic	\$103
Heavy Grain	\$116
Heavy Grass	\$106

July 2020 TransTasman Angus Cattle Evaluation

	CE Dir	CE Dtr	GL	BW	200	400	600	MCW	Milk	SS	CWT	EMA	RIB	Rump	RBY	IMF
EBV	+1.4	+3.6	-4.1	+4.5	+44	+80	+106	+95	+14	+1.5	+59	+4.3	+0.4	-0.5	-0.3	+2.2
Acc	60%	57%	64%	72%	64%	63%	64%	63%	60%	60%	61%	60%	63%	61%	62%	60%

Genetic Conditions: AMFU,CAFU,DDFU,NHFU

COMMENTS: P7 is a full flush brother to Lot 46. He has a smooth shoulder set, with good neck extension for calving ease with good growth traits. A complete bull with a good muscularity, depth of body and style.

PURCHASER

\$

45

WAKEFIELD NIAGARA P11^{SV}

IDENT: ANNP11 DOB: 08/04/2018 HERDBOOK: HBR

HOOVER DAMUSA16124994#
SIRE: S S NIAGARA Z29 USA17287387^{SV}
 JET S S X144 USA16715036#
 S A V THUNDERBIRD 9061 USA16396499^{SV}
DAM: WAKEFIELD VICKY K667 ANNK667#
 WAKEFIELD VICKY F861 ANNF861^{SV}

SYDGEN C C & 7 USA15330743#
 ERICA OF ELLSTON C124 USA14851883#
 B/R NEW DAY 454 USA14675445#
 JET S S T151 USA15790012#
 S A V FINAL ANSWER 0035 USA0035#
 S A V EMBLYNETTE 7411 USA15688293#
 R/M ULTRA CASH FLOW 102 USA13834417#
 GLENCAIRN VICKY V63 DLGV63#

Index	\$Value
Breeding	\$108
Domestic	\$112
Heavy Grain	\$102
Heavy Grass	\$113

July 2020 TransTasman Angus Cattle Evaluation

	CE Dir	CE Dtr	GL	BW	200	400	600	MCW	Milk	SS	CWT	EMA	RIB	Rump	RBY	IMF
EBV	+2.4	-2.0	-1.8	+4.1	+52	+93	+115	+84	+19	+0.1	+66	+5.4	+1.2	+0.1	+0.6	+1.3
Acc	54%	45%	77%	69%	64%	64%	65%	62%	57%	59%	59%	55%	59%	56%	56%	56%

Genetic Conditions: AMFU,CAFU,DDFU,NHFU

COMMENTS: There's a lot to like about this SS Niagara son. He is a free moving, easy fleshing bull that is easy on the eye! He has a good head, depth of body and a smooth muscle pattern. He has a wonderful temperament and has been used lightly in the Wakefield herd. Top 15% for rib fat

PURCHASER

\$

46

WAKEFIELD CONVERSION P13#

IDENT: ANNP13 DOB: 18/04/2018 HERDBOOK: HBR

SILVEIRAS CONVERSION 8064USA16262077#

SIRE: WAKEFIELD CONVERSION L706 ANN1706SV

MILLAH MURRAH FLOWER G24 NMMG24PV

S A V BRAVE 8320 USA16107533#

DAM: WAKEFIELD CRYSTAL J480 ANNJ480#

WAKEFIELD CRYSTAL F852 ANNF852#

BT CROSSOVER 758N USA758N#

EXG SARAS DREAM S609 R3 USA15368244#

HIGHLANDER OF STERN AB NZE12170004408#

MILLAH MURRAH FLOWER E60 NMME60PV

S A V MANDAN 5664 USA15107825#

S A V MAY 2397 USA14140872#

S A V NET WORTH 4200 USA14739204#

WAKEFIELD CRYSTAL C1095 ANNC1095#

Index	\$Value
Breeding	\$99
Domestic	\$98
Heavy Grain	\$93
Heavy Grass	\$101

July 2020 TransTasman Angus Cattle Evaluation

	CE Dir	CE Dtr	GL	BW	200	400	600	MCW	Milk	SS	CWT	EMA	RIB	Rump	RBV	IMF
EBV	-7.1	-8.0	-3.4	+6.5	+50	+86	+110	+98	+17	+2.4	+61	+7.6	+0.0	+1.0	+1.1	+1.0
Acc	48%	39%	57%	67%	54%	51%	52%	51%	45%	47%	46%	43%	46%	44%	44%	43%

Genetic Conditions: AMFU,CAFU,DDFU,NHFU

COMMENTS: A powerful grand son of Silveria Conversion out of a SAV Brave female. He has a smooth muscle pattern, amazing growth and an easy fleshing ability on a big frame. He has tremendous length of body with plenty of punch. Well worth your consideration. Top 20% for EMA

PURCHASER

\$

47

WAKEFIELD TIGER P58#

IDENT: ANNP58 DOB: 07/09/2018 HERDBOOK: APR

HF KODIAK 5RCAN1274305PV

SIRE: HF TIGER 5T CAN1402252#

HF ECHO 84R CAN1274314#

ARDROSSAN EQUATOR A241 NAQA241PV

DAM: WAKEFIELD FANCY PANTS J462 ANNJ462#

WAKEFIELD FANCY PANTS F851 ANNF851SV

SANDY BAR ADVANTAGE 43M USA1119001#

WILBAR RUBY 955N CAN1145690#

TC FREEDOM 104 USA104#

HFDF ECHO 6N CAN1186561#

PAPA EQUATOR 2928 USA2928#

ARDROSSAN PRINCESS W38 NAQW38PV

LT 598 BANDO 9074 USA9074#

WAKEFIELD D502 ANND502#

Index	\$Value
Breeding	\$123
Domestic	\$116
Heavy Grain	\$123
Heavy Grass	\$121

July 2020 TransTasman Angus Cattle Evaluation

	CE Dir	CE Dtr	GL	BW	200	400	600	MCW	Milk	SS	CWT	EMA	RIB	Rump	RBV	IMF
EBV	+3.8	+4.8	-7.8	+3.9	+49	+89	+115	+105	+19	+2.3	+74	+3.5	-0.7	-0.3	+1.2	+0.7
Acc	61%	52%	84%	73%	64%	63%	64%	62%	61%	61%	60%	59%	61%	59%	58%	58%

Genetic Conditions: AMFU,CAFU,DDFU,NHFU

COMMENTS: P58 is a complete, deep flanked, punchy young bull with a natural doing ability on a good frame. This HF Tiger son has a wonderful temperament and is a very muscular bull with an outstanding topline. Top 10% for gestation length and days to calving. Top 5% for Net feed efficiency NFI, and top 20% for retail beef yield RBV.

PURCHASER

\$

48

WAKEFIELD EMPEROR P9#

IDENT: ANNP9 DOB: 28/03/2018 HERDBOOK: HBR

TE MANIA BERKLEY B1VTMB1SV

SIRE: TE MANIA EMPEROR E343 VTME343PV

TE MANIA LOWAN Z74 VTMZ74PV

WAKEFIELD INFINITY F856 ANNF856SV

DAM: WAKEFIELD VICKY H325 ANNH325SV

WAKEFIELD VICKY F863 ANNF863#

TE MANIA YORKSHIRE Y437 VTMV437PV

TE MANIA LOWAN Z53 VTMZ53#

B T ULTRAVOX 297E USA297E#

TE MANIA LOWAN V201 VTMV201#

TE MANIA INFINITY 04 379 AB NZE04379#

THE GRANGE RITA 2811 B238 WFOB238SV

GLENCALRN MAXIMUS W36 DLGW36PV

GLENCALRN VICKY V63 DLGV63#

Index	\$Value
Breeding	\$108
Domestic	\$103
Heavy Grain	\$115
Heavy Grass	\$105

July 2020 TransTasman Angus Cattle Evaluation

	CE Dir	CE Dtr	GL	BW	200	400	600	MCW	Milk	SS	CWT	EMA	RIB	Rump	RBV	IMF
EBV	+1.5	+3.7	-4.1	+4.4	+44	+80	+105	+95	+14	+1.5	+59	+4.3	+0.4	-0.4	-0.3	+2.2
Acc	60%	57%	64%	72%	64%	63%	64%	63%	60%	60%	61%	60%	63%	61%	62%	60%

Genetic Conditions: AMFU,CAFU,DDFU,NHFU

COMMENTS: P9 is another full flush brother to Lot 46 & 47 by the popular AI sire Te Mania Emperor. He has good growth and is very easy fleshing. Put this Rhino in your paddock and feel like you are on safari!

PURCHASER

\$

49

WAKEFIELD EMPEROR P5#

IDENT: ANNP5 DOB: 23/03/2018 HERDBOOK: HBR

TE MANIA BERKLEY B1VTMB1SV

TE MANIA YORKSHIRE Y437 VTMV437PV

SIRE: TE MANIA EMPEROR E343 VTME343PV

TE MANIA LOWAN Z53 VTMZ53#

TE MANIA LOWAN Z74 VTMZ74PV

B T ULTRAVOX 297E USA297E#

TE MANIA LOWAN V201 VTMV201#

WAKEFIELD INFINITY F856 ANNF856SV

TE MANIA INFINITY 04 379 AB NZE04379#

DAM: WAKEFIELD VICKY H325 ANNH325SV

THE GRANGE RITA 2811 B238 WFOB238SV

WAKEFIELD VICKY F863 ANNF863#

GLENCAIRN MAXIMUS W36 DLGW36PV

GLENCAIRN VICKY V63 DLGV63#

Index	\$Value
Breeding	\$107
Domestic	\$103
Heavy Grain	\$113
Heavy Grass	\$105

July 2020 TransTasman Angus Cattle Evaluation

	CE Dir	CE Dtr	GL	BW	200	400	600	MCW	Milk	SS	CWT	EMA	RIB	Rump	RBY	IMF
EBV	+2.5	+4.1	-4.3	+4.0	+43	+79	+103	+92	+15	+1.5	+58	+4.3	+0.4	-0.4	-0.4	+2.2
Acc	60%	57%	64%	72%	64%	63%	64%	63%	60%	60%	61%	60%	63%	61%	62%	60%

Genetic Conditions: AMFU,CAFU,DDFU,NHFU

COMMENTS: There's a lot to like about this ET Emperor son another flush brother to Lot 46 & 47. He is a free moving, muscular, easy fleshing bull that is easy on the eye! He has good body length with a good top line!

PURCHASER

\$

50

WAKEFIELD KAISER P15#

IDENT: ANNP15 DOB: 11/07/2018 HERDBOOK: HBR

TE MANIA FOE F734VTMF734SV

TE MANIA CALAMUS C46 VTMC46SV

SIRE: GRANITE RIDGE KAISER K26 SJKK26SV

TE MANIA DANDLOO D700 VTMD700#

GRANITE RIDGE SUPREME F158 SJKF158#

NICHOLS QUIET LAD T9 USA15922661#

GRANITE RIDGE SUPREME D85 SJKD85#

WAKEFIELD INFINITY F856 ANNF856SV

TE MANIA INFINITY 04 379 AB NZE04379#

DAM: WAKEFIELD VICKY H325 ANNH325SV

THE GRANGE RITA 2811 B238 WFOB238SV

WAKEFIELD VICKY F863 ANNF863#

GLENCAIRN MAXIMUS W36 DLGW36PV

GLENCAIRN VICKY V63 DLGV63#

Index	\$Value
Breeding	\$110
Domestic	\$104
Heavy Grain	\$114
Heavy Grass	\$109

July 2020 TransTasman Angus Cattle Evaluation

	CE Dir	CE Dtr	GL	BW	200	400	600	MCW	Milk	SS	CWT	EMA	RIB	Rump	RBY	IMF
EBV	+1.2	+1.8	-0.9	+4.4	+45	+82	+109	+93	+20	+1.6	+63	+6.8	-0.5	-1.0	+0.3	+1.7
Acc	54%	44%	84%	71%	62%	62%	62%	57%	51%	59%	53%	52%	55%	53%	51%	51%

Genetic Conditions: AMFU,CAFU,DDFU,NHFU

COMMENTS: P15 is a Granite Ridge Kaiser son with a good temperament. He was the natural calf of H325 and what an exceptional bull he is! He has a smooth shoulder set, with good neck extension for calving ease with good growth traits. A complete bull with a good muscularity, depth of body and style. Don't overlook this bull! Top 20% for milk,

PURCHASER

\$

51

WAKEFIELD NIAGARA P10SV

IDENT: ANNP10 DOB: 29/03/2018 HERDBOOK: HBR

HOOVER DAMUSA16124994#

SYDGEN C C & 7 USA15330743#

SIRE: S S NIAGARA Z29 USA17287387SV

ERICA OF ELLSTON C124 USA14851883#

JET S S X144 USA16715036#

B/R NEW DAY 454 USA14675445#

JET S S T151 USA15790012#

S A V NET WORTH 4200 USA14739204#

S A V 8180 TRAVELER 004 USA13512009#

DAM: WAKEFIELD CRYSTAL F852 ANNF852#

S A V MAY 2410 USA14140883#

WAKEFIELD CRYSTAL C1095 ANNC1095#

ALBERDA TRAVELER 416 USA416#

TE MANIA JEDDA P123+94 VTMP123+94#

Index	\$Value
Breeding	\$119
Domestic	\$110
Heavy Grain	\$126
Heavy Grass	\$118

July 2020 TransTasman Angus Cattle Evaluation

	CE Dir	CE Dtr	GL	BW	200	400	600	MCW	Milk	SS	CWT	EMA	RIB	Rump	RBY	IMF
EBV	+4.5	-5.4	-3.7	+5.2	+55	+96	+132	+127	+19	+2.0	+64	+4.1	-1.2	-0.7	+0.8	+1.7
Acc	55%	47%	79%	70%	65%	65%	66%	63%	57%	60%	60%	57%	61%	58%	57%	57%

Genetic Conditions: AMFU,CAFU,DDFU,NHFU

COMMENTS: There's a lot to like about this SS Niagara son. He is a free moving, easy fleshing bull that is easy on the eye! He has good body length with a good top line! We like the temperament on the Niagara progeny. His dam is a SAV Net Worth daughter that is fertile, milks well and produces progeny that are correct with plenty of punch. He has been used lightly in the Wakefield herd. Top 15% for 200 day growth, top 20% for 400 day and top 10% for 600 day growth.

PURCHASER

\$

52

WAKEFIELD NIAGARA P20#

IDENT: ANNP20 DOB: 14/08/2018 HERDBOOK: APR

HOOVER DAMUSA16124994#

SIRE: S S NIAGARA Z29 USA17287387^{SV}

JET S S X144 USA16715036#

A A R TEN X 7008 S A USA15719841^{SV}

DAM: WAKEFIELD LUCY L764 ANN1764#

WAKEFIELD B1200 ANNB1200#

SYDGEN C C & 7 USA15330743#

ERICA OF ELLSTON C124 USA14851883#

B/R NEW DAY 454 USA14675445#

JET S S T151 USA15790012#

MYTTY IN FOCUS USA13880818#

A A R LADY KELTON 5551 USA15151449#

P A R B DESIGN PLUS 97 USA97#

WAKEFIELD A893 ♀ANNA893#

Index	\$Value
Breeding	\$130
Domestic	\$126
Heavy Grain	\$138
Heavy Grass	\$128

July 2020 TransTasman Angus Cattle Evaluation

	CE Dir	CE Dtr	GL	BW	200	400	600	MCW	Milk	SS	CWT	EMA	RIB	Rump	RBY	IMF
EBV	+9.3	+4.8	-6.4	+1.9	+52	+98	+125	+104	+19	+1.5	+70	+6.5	-0.9	-2.3	+1.6	+1.8
Acc	54%	42%	83%	71%	61%	59%	60%	58%	53%	56%	55%	52%	55%	52%	52%	52%

Genetic Conditions: AMFU,CAFU,DDFU,NHFU

COMMENTS: P20 is a stylish Niagara son with amazing body length and a true to type Angus presence. He has good growth and calving ease figures with plenty of muscle. His dam is a Ten X daughter that is a favourite in the herd. Top 10% for calving ease direct, top 20% for gestation length and top 10% for low birth weight, top 15% for 400 day growth, top 20% for 600 day growth, top 10% for RBY and top 10% for domestic index.

PURCHASER

\$

53

WAKEFIELD KAISER P30#

IDENT: ANNP30 DOB: 20/08/2018 HERDBOOK: APR

TE MANIA FOE F734VTMF734^{SV}SIRE: GRANITE RIDGE KAISER K26 SJKK26^{SV}

GRANITE RIDGE SUPREME F158 SJKF158#

AYRVALE BARTEL E7 HIOE7^{PV}

DAM: WAKEFIELD FANCY PANTS L731 ANN1731#

WAKEFIELD FANCY PANTS J451 ANNJ451#

TE MANIA CALAMUS C46 VTMC46^{SV}

TE MANIA DANDLOO D700 VTMD700#

NICHOLS QUIET LAD T9 USA15922661#

GRANITE RIDGE SUPREME D85 SJKD85#

TE MANIA BARTEL B219 VTMB219^{PV}EAGLEHAWK JEDDA B32 BVVB32^{SV}ARDROSSAN EQUATOR A241 NAQA241^{PV}WAKEFIELD FANCY PANTS F851 ANN1731^{SV}

Index	\$Value
Breeding	\$149
Domestic	\$128
Heavy Grain	\$162
Heavy Grass	\$141

July 2020 TransTasman Angus Cattle Evaluation

	CE Dir	CE Dtr	GL	BW	200	400	600	MCW	Milk	SS	CWT	EMA	RIB	Rump	RBY	IMF
EBV	+8.8	+7.4	-9.7	+3.7	+52	+93	+126	+106	+22	+2.2	+75	+7.4	+0.2	-0.1	+0.7	+2.0
Acc	56%	47%	84%	71%	63%	63%	63%	59%	54%	61%	56%	56%	58%	57%	55%	55%

Genetic Conditions: AMFU,CAFU,DDFU,NHFU

COMMENTS: Another son of GR Kaiser that has a tremendous phenotype and presence. This bull has a good temperament and a natural doing ability. The Kaiser progeny are showing eye appeal and good growth. Top 10% for calving ease direct and top 15% for calving ease daughters. Top 2% for gestation length. top 5% for days to calving and top 15% for carcass weight, top 20% for EMA, top 10% for all indexes.

PURCHASER

\$

54

WAKEFIELD PATRIOT P25#

IDENT: ANNP25 DOB: 20/08/2018 HERDBOOK: APR

CONNEALY CAPITALIST 028USA16752262#

SIRE: DEER VALLEY PATRIOT 3222 USA17577916^{SV}

DEER VALLEY RITA 0274 USA16659290#

WAKEFIELD INGENUITY J465 ANNJ465^{PV}

DAM: WAKEFIELD CLASSIC L782 ANN1782#

WAKEFIELD CLASSIC J482 ANNJ482#

S A V FINAL ANSWER 0035 USA0035#

PRIDES PITA OF CONANGA 8821 USA16204878#

SITZ UPWARD 307R USA14963730^{SV}

G A R OBJECTIVE 2345 USA15129485#

G A R INGENUITY USA16497066#

WAKEFIELD G973 ANN1731^{SV}

SITZ JACKSON 431T USA15637146#

WAKEFIELD CLASSIC F853 ANN1731^{SV}

Index	\$Value
Breeding	\$124
Domestic	\$122
Heavy Grain	\$132
Heavy Grass	\$123

July 2020 TransTasman Angus Cattle Evaluation

	CE Dir	CE Dtr	GL	BW	200	400	600	MCW	Milk	SS	CWT	EMA	RIB	Rump	RBY	IMF
EBV	+5.0	+2.4	-4.3	+2.8	+50	+94	+120	+100	+17	+1.1	+66	+6.9	-1.1	-2.2	+1.5	+1.9
Acc	54%	40%	84%	72%	60%	59%	60%	57%	51%	57%	53%	52%	54%	52%	50%	51%

Genetic Conditions: AMFU,CAFU,DDF,NHFU

COMMENTS: P25 is a wonderful Deer Valley Patriot son that has caught our eye since his birth. He has tremendous body length and great do ability with good growth. Well worth a look! Top 20% for birth weight, top 15% for RBY and top 20% for domestic index.

PURCHASER

\$

55

WAKEFIELD KALUHA P42[#]

IDENT: ANNP42 DOB: 29/08/2018 HERDBOOK: HBR

MILWILLAH GATSBY G279NJWG279^{PV}
SIRE: CLUNIE RANGE KALUHA K330 NBHK330^{PV}
 CLUNIE RANGE PRINCESS H381 NBHH381^{SV}
 S A V THUNDERBIRD 9061 USA16396499^{SV}
DAM: WAKEFIELD CLASSIC L730 ANNL730[#]
 WAKEFIELD CLASSIC J477 ANNJ477[#]

TUWHARETOA REGENT D145 BNAD145^{PV}
 MILWILLAH LOWAN D112 NJWD112^{SV}
 TE MANIA EMPEROR E343 VTME343^{PV}
 CLUNIE RANGE PRINCESS E64 NBHE64[#]
 S A V FINAL ANSWER 0035 USA0035[#]
 S A V EMBLYNETTE 7411 USA15688293[#]
 SITZ JACKSON 431T USA15637146[#]
 WAKEFIELD CLASSIC F853 ANNF853^{SV}

Index	\$Value
Breeding	\$141
Domestic	\$126
Heavy Grain	\$152
Heavy Grass	\$135

July 2020 TransTasman Angus Cattle Evaluation

	CE Dir	CE Dtr	GL	BW	200	400	600	MCW	Milk	SS	CWT	EMA	RIB	Rump	RBY	IMF
EBV	+5.7	+0.3	-9.6	+3.6	+55	+96	+127	+108	+15	+1.5	+76	+6.9	+1.0	-0.1	+0.8	+2.2
Acc	55%	46%	85%	73%	62%	62%	62%	58%	53%	60%	60%	59%	62%	59%	62%	59%

Genetic Conditions: AMFU,CAFU,DDFU,NHFU

COMMENTS: P42 is a Clunie Range Kaluha son out of a SAV Thunderbird daughter. Considering the hard life these bulls have had we are very happy with their do ability and staying power. He has good gestation figures, with good depth of flank and a wonderful top line. He has a presence and style about him with good length of body. This bull is well worth your consideration. Top 2% for gestation length, top 10% for carcass weight, domestic and heavy grass index, top 15% for 200 day growth, top 20% for 400 and 600 day growth, rib fat and Angus breeding index and heavy grain index.

PURCHASER

\$

56

WAKEFIELD NIAGARA P43[#]

IDENT: ANNP43 DOB: 29/08/2018 HERDBOOK: APR

HOOVER DAMUSA16124994[#]
SIRE: S S NIAGARA Z29 USA17287387^{SV}
 JET S S X144 USA16715036[#]
 MILLAH MURRAH EQUATOR D78 NMMD78^{PV}
DAM: WAKEFIELD JEMIMA J458 ANNJ458[#]
 WAKEFIELD F885 ANNF885^{SV}

SYDGEN C C & 7 USA15330743[#]
 ERICA OF ELLSTON C124 USA14851883[#]
 B/R NEW DAY 454 USA14675445[#]
 JET S S T151 USA15790012[#]
 BT EQUATOR 395M USA14237157[#]
 MILLAH MURRAH RADO Y119 NMMY119[#]
 WAKEFIELD DIRECTION D511 ANND511^{SV}
 WAKEFIELD W342 ?ANNW342[#]

Index	\$Value
Breeding	\$130
Domestic	\$122
Heavy Grain	\$133
Heavy Grass	\$129

July 2020 TransTasman Angus Cattle Evaluation

	CE Dir	CE Dtr	GL	BW	200	400	600	MCW	Milk	SS	CWT	EMA	RIB	Rump	RBY	IMF
EBV	+4.7	+3.9	-4.4	+3.8	+53	+101	+132	+123	+19	+1.8	+72	+6.1	-0.2	-0.5	+1.2	+1.2
Acc	54%	42%	84%	72%	61%	59%	60%	58%	52%	55%	54%	51%	54%	51%	51%	50%

Genetic Conditions: AMFU,CAFU,DDFU,NHFU

COMMENTS: A bull that has good muscularity and a great top line. SS Niagara is giving us thick, correct phenotypic bulls and feminine females with good growth. The J458 dam has a perfect udder, milks well and is a wonderful wedge shape with a good topline. Top 10% for 400 day growth, top 15% for 600 day growth and top 20% for 200 day growth, carcass weight, RBY, domestic index and heavy grass index.

PURCHASER

\$

57

WAKEFIELD NIAGARA P34[#]

IDENT: ANNP34 DOB: 21/08/2018 HERDBOOK: APR

HOOVER DAMUSA16124994[#]
SIRE: S S NIAGARA Z29 USA17287387^{SV}
 JET S S X144 USA16715036[#]
 MILLAH MURRAH EQUATOR D78 NMMD78^{PV}
DAM: WAKEFIELD JASMINE M336 ANNM336[#]
 WAKEFIELD JASMINE J510 ANNJ510[#]

SYDGEN C C & 7 USA15330743[#]
 ERICA OF ELLSTON C124 USA14851883[#]
 B/R NEW DAY 454 USA14675445[#]
 JET S S T151 USA15790012[#]
 BT EQUATOR 395M USA14237157[#]
 MILLAH MURRAH RADO Y119 NMMY119[#]
 RAFF EXTERMINATOR E201 QRFE201^{PV}
 WAKEFIELD B1091 ANNB1091[#]

Index	\$Value
Breeding	\$128
Domestic	\$121
Heavy Grain	\$134
Heavy Grass	\$127

July 2020 TransTasman Angus Cattle Evaluation

	CE Dir	CE Dtr	GL	BW	200	400	600	MCW	Milk	SS	CWT	EMA	RIB	Rump	RBY	IMF
EBV	+3.1	+3.5	-3.0	+4.2	+55	+103	+137	+128	+18	+1.6	+77	+5.6	-0.9	-1.8	+1.4	+1.2
Acc	55%	42%	83%	71%	60%	58%	60%	57%	52%	55%	54%	51%	54%	51%	51%	51%

Genetic Conditions: AMFU,CAFU,DDFU,NHFU

COMMENTS: P34 is another Niagara son that is slick coated and deep flanked. A bull that has good muscularity and a great top line. Niagara is giving us thick, correct phenotypic bulls with incredible growth and power that are born easily. The M336 dam has a perfect udder, milks well and has a wonderful temperament, a stylish sweet cow in our herd. Top 10% for 400 and 600 day growth, feed efficiency and carcass weight. Top 15% for RBY and 200 day growth, top 20% for domestic and heavy grass indexes.

PURCHASER

\$

58

WAKEFIELD PATRIOT P55#

IDENT: ANNP55 DOB: 07/09/2018 HERDBOOK: APR

CONNEALY CAPITALIST 028USA16752262#

S A V FINAL ANSWER 0035 USA0035#

PRIDES PITA OF CONANGA 8821 USA16204878#

SIRE: DEER VALLEY PATRIOT 3222 USA17577916SV

DEER VALLEY RITA 0274 USA16659290#

ARDROSSAN EQUATOR A241 NAQA241PV

DAM: WAKEFIELD HULLABALOO H348 ANNH348#

WAKEFIELD B1090 ANNB1090#

PAPA EQUATOR 2928 USA2928#
ARDROSSAN PRINCESS W38 NAQW38PVSITZ ALLIANCE 6595 USA6595#
UNKNOWN UNKNOWN

Index	\$Value
Breeding	\$126
Domestic	\$123
Heavy Grain	\$134
Heavy Grass	\$123

July 2020 TransTasman Angus Cattle Evaluation

	CE Dir	CE Dtr	GL	BW	200	400	600	MCW	Milk	SS	CWT	EMA	RIB	Rump	RBV	IMF
EBV	+5.4	+4.3	-5.5	+2.9	+51	+93	+118	+96	+17	+1.5	+72	+5.9	-1.5	-2.6	+1.6	+1.8
Acc	55%	44%	84%	72%	63%	61%	62%	59%	55%	59%	56%	55%	57%	55%	54%	54%

Genetic Conditions: AMFU,CAFU,DDFU,NHFU

COMMENTS: Another stylish son of DV Patriot that is long bodied and muscular on a large frame. He has good neck extension and shoulder set that would be perfect for calving ease. Well worth your consideration. Top 20% for low birth weight, top 10% for RBV and top 15% for domestic index.

PURCHASER

\$

59

WAKEFIELD KALUHA P71#

IDENT: ANNP71 DOB: 12/09/2018 HERDBOOK: HBR

MILWILLAH GATSBY G279NJWG279PV

TUWHARETOA REGENT D145 BNAD145PV

MILWILLAH LOWAN D112 NJWD112SV

SIRE: CLUNIE RANGE KALUHA K330 NBHK330PV

CLUNIE RANGE PRINCESS H381 NBHH381SV

MILLAH MURRAH EQUATOR D78 NMMD78PV

DAM: WAKEFIELD ABIGAIL F854 ANNF854SV

MILLAH MURRAH ABIGAIL B6 NMMB6PV

TE MANIA EMPEROR E343 VTME343PV
CLUNIE RANGE PRINCESS E64 NBHE64#BT EQUATOR 395M USA14237157#
MILLAH MURRAH RADO Y119 NMMY119#CRUSADER OF STERN AB NZE1217000846#
MILLAH MURRAH ABIGAIL Y8 NMMY8#

Index	\$Value
Breeding	\$128
Domestic	\$115
Heavy Grain	\$138
Heavy Grass	\$123

July 2020 TransTasman Angus Cattle Evaluation

	CE Dir	CE Dtr	GL	BW	200	400	600	MCW	Milk	SS	CWT	EMA	RIB	Rump	RBV	IMF
EBV	+3.7	+2.3	-5.5	+4.1	+49	+88	+119	+110	+18	+1.0	+73	+6.3	+0.5	-0.6	+0.7	+1.9
Acc	55%	47%	66%	73%	64%	64%	65%	60%	55%	61%	62%	60%	63%	61%	63%	60%

Genetic Conditions: AMFU,CAFU,DDFU,NHFU

COMMENTS: An exceptional bull that has a wonderful eye appeal with good muscularity and a great top line. This ET son of CR Kaluha has stood out since he hit the ground. His dam has been a donor in our herd for many years and consistently produces progeny that have excellent structure on good frames that are fertile, milk well with good do ability and great temperaments. We were going to keep this young bull for our selves but have decided to let him go. Top 15% for NFI and top 20% for carcase weight.

PURCHASER

\$

60

WAKEFIELD KAISER P57#

IDENT: ANNP57 DOB: 07/09/2018 HERDBOOK: HBR

TE MANIA FOE F734VTMF734SV

TE MANIA CALAMUS C46 VTMC46SV

TE MANIA DANDLOO D700 VTMD700#

SIRE: GRANITE RIDGE KAISER K26 SJJK26SV

GRANITE RIDGE SUPREME F158 SJKF158#

SILVEIRAS CONVERSION 8064 USA16262077#

DAM: WAKEFIELD FLOWER L702 ANNL702SV

MILLAH MURRAH FLOWER G24 NMMG24PV

NICHOLS QUIET LAD T9 USA15922661#
GRANITE RIDGE SUPREME D85 SJKD85#BT CROSSOVER 758N USA758N#
EXG SARAS DREAM S609 R3 USA15368244#HIGHLANDER OF STERN AB NZE12170004408#
MILLAH MURRAH FLOWER E60 NMME60PV

Index	\$Value
Breeding	\$124
Domestic	\$111
Heavy Grain	\$129
Heavy Grass	\$121

July 2020 TransTasman Angus Cattle Evaluation

	CE Dir	CE Dtr	GL	BW	200	400	600	MCW	Milk	SS	CWT	EMA	RIB	Rump	RBV	IMF
EBV	-2.6	-1.4	-5.3	+6.2	+53	+93	+126	+122	+20	+2.6	+70	+9.1	-0.4	-0.3	+1.2	+1.3
Acc	55%	47%	67%	72%	66%	65%	66%	61%	57%	63%	58%	58%	61%	59%	57%	57%

Genetic Conditions: AMFU,CAFU,DDFU,NHFU

COMMENTS: An ET calf by GR Kaiser out of our donor dam Wakefield Flower L702. A neat little bull that has some pretty special bloodlines in his pedigree. Worth considering. Top 20% for 200 and 600 day growth, scrotal size and RBV. Top 10% for NFI and EMA.

PURCHASER

\$

61

WAKEFIELD KAISER P37#

IDENT: ANNP37 DOB: 24/08/2018 HERDBOOK: APR

TE MANIA FOE F734VTMF734^{SV}SIRE: GRANITE RIDGE KAISER K26 SJKK26^{SV}

GRANITE RIDGE SUPREME F158 SJKF158#

RAFF EXPLOSIVE E108 QRFE108^{PV}

DAM: WAKEFIELD JADE J446 ANNJ446#

WAKEFIELD F876 ANNF876^{SV}TE MANIA CALAMUS C46 VTMC46^{SV}

TE MANIA DANDLOO D700 VTMD700#

NICHOLS QUIET LAD T9 USA15922661#

GRANITE RIDGE SUPREME D85 SJKD85#

CONNEALY DANNY BOY USA13966936#

HOFF BLACKBIRD 594 5217 USA15141036#

WAKEFIELD DIRECTION D511 ANND511^{SV}

WAKEFIELD W341 ?ANNW341#

Index	\$Value
Breeding	\$122
Domestic	\$112
Heavy Grain	\$123
Heavy Grass	\$121

July 2020 TransTasman Angus Cattle Evaluation

	CE Dir	CE Dtr	GL	BW	200	400	600	MCW	Milk	SS	CWT	EMA	RIB	Rump	RBY	IMF
EBV	+3.6	+4.1	-7.8	+4.9	+51	+89	+121	+123	+15	+2.3	+71	+6.6	+0.6	+0.1	+0.8	+1.0
Acc	54%	43%	84%	71%	62%	61%	62%	57%	52%	59%	53%	52%	54%	53%	50%	51%

Genetic Conditions: AMFU,CAFU,DDFU,NHFU

COMMENTS: A Granite Ridge Kaiser son out of a Raff Explosive cow. He has great length of body and is free moving on a large frame. Plenty of growth and meat in this bull. Top 10% for gestation length.

PURCHASER _____

\$

62

WAKEFIELD PATRIOT P39#

IDENT: ANNP39 DOB: 25/08/2018 HERDBOOK: APR

CONNEALY CAPITALIST 028USA16752262#

SIRE: DEER VALLEY PATRIOT 3222 USA17577916^{SV}

DEER VALLEY RITA 0274 USA16659290#

WAKEFIELD EXTERMINATOR J494 ANNJ494^{SV}

DAM: WAKEFIELD VICTORY M312 ANNM312#

WAKEFIELD VICTORY J500 ANNJ500#

S A V FINAL ANSWER 0035 USA0035#

PRIDES PITA OF CONANGA 8821 USA16204878#

SITZ UPWARD 307R USA14963730^{SV}

G A R OBJECTIVE 2345 USA15129485#

RAFF EXTERMINATOR E201 QRFE201^{PV}

WAKEFIELD B1200 ANNB1200#

RAFF EXPLOSIVE E108 QRFE108^{PV}WAKEFIELD V251 ANNV251^{SV}

Index	\$Value
Breeding	\$114
Domestic	\$113
Heavy Grain	\$120
Heavy Grass	\$113

July 2020 TransTasman Angus Cattle Evaluation

	CE Dir	CE Dtr	GL	BW	200	400	600	MCW	Milk	SS	CWT	EMA	RIB	Rump	RBY	IMF
EBV	-1.6	-0.8	-2.2	+4.2	+53	+96	+125	+114	+13	+1.2	+71	+6.8	-2.0	-3.6	+2.0	+1.5
Acc	54%	40%	83%	70%	59%	58%	59%	55%	50%	56%	51%	51%	52%	50%	49%	49%

Genetic Conditions: AMFU,CAFU,DDFU,NHFU

COMMENTS: A wonderful Deer Valley Patriot son that stands on good legs and frame. He has good growth traits from his Raff bloodlines on his dams side. Top 5% for RBY and top 20% for 400 and 600 day growth.

PURCHASER _____

\$

63

WAKEFIELD NIAGARA P73#

IDENT: ANNP73 DOB: 13/09/2018 HERDBOOK: APR

HOOVER DAMUSA16124994#

SIRE: S S NIAGARA Z29 USA17287387^{SV}

JET S S X144 USA16715036#

WAKEFIELD EXTERMINATOR J494 ANNJ494^{SV}

DAM: WAKEFIELD MAYFAIR M315 ANNM315#

WAKEFIELD B1091 ANNB1091#

SYDGEN C C & 7 USA15330743#

ERICA OF ELLSTON C124 USA14851883#

B/R NEW DAY 454 USA14675445#

JET S S T151 USA15790012#

RAFF EXTERMINATOR E201 QRFE201^{PV}

WAKEFIELD B1200 ANNB1200#

SITZ ALLIANCE 6595 USA6595#

UNKNOWN UNKNOWN

Index	\$Value
Breeding	\$116
Domestic	\$115
Heavy Grain	\$118
Heavy Grass	\$118

July 2020 TransTasman Angus Cattle Evaluation

	CE Dir	CE Dtr	GL	BW	200	400	600	MCW	Milk	SS	CWT	EMA	RIB	Rump	RBY	IMF
EBV	+4.4	+0.7	-2.5	+4.0	+51	+95	+123	+105	+17	+1.5	+68	+5.5	-0.6	-1.6	+1.2	+1.3
Acc	51%	39%	82%	69%	58%	55%	57%	55%	48%	52%	50%	47%	50%	47%	47%	47%

Genetic Conditions: AMFU,CAFU,DDFU,NHFU

COMMENTS: Another Niagara son that is a thick set bull with a smooth muscle pattern.

PURCHASER _____

\$

64

WAKEFIELD NIAGARA P32#

IDENT: ANNP32 DOB: 21/08/2018 HERDBOOK: APR

HOOVER DAMUSA16124994#

SIRE: S S NIAGARA Z29 USA17287387^{SV}

JET S S X144 USA16715036#

TE MANIA EMPEROR E343 VTME343^{PV}

DAM: WAKEFIELD JADE M321 ANNM321#

WAKEFIELD JADE J446 ANNJ446#

SYDGEN C C & 7 USA15330743#

ERICA OF ELLSTON C124 USA14851883#

B/R NEW DAY 454 USA14675445#

JET S S T151 USA15790012#

TE MANIA BERKLEY B1 VTMB1^{SV}TE MANIA LOWAN Z74 VTMTZ74^{PV}RAFF EXPLOSIVE E108 QRFE108^{PV}WAKEFIELD F876 ANNF876^{SV}

Index	\$Value
Breeding	\$129
Domestic	\$122
Heavy Grain	\$135
Heavy Grass	\$127

July 2020 TransTasman Angus Cattle Evaluation

	CE Dir	CE Dtr	GL	BW	200	400	600	MCW	Milk	SS	CWT	EMA	RIB	Rump	RBV	IMF
EBV	+4.6	+3.6	-2.9	+3.7	+53	+99	+128	+119	+16	+1.9	+71	+6.2	+0.1	-0.9	+0.9	+1.6
Acc	55%	43%	83%	71%	61%	58%	60%	58%	52%	55%	54%	52%	54%	52%	52%	52%

Genetic Conditions: AMFU, CAFU, DDFU, NHFU

COMMENTS: The progeny from SS Niagara are docile and correct while maintaining natural finishing ability. Females are breeding well in our herd and the bulls have wonderful phenotypes with good temperaments. Top 15% for 400 and 600 day growth, top 20% for domestic and heavy grass indexes.

PURCHASER _____

\$ _____

65

WAKEFIELD KAISER P84#

IDENT: ANNP84 DOB: 24/09/2018 HERDBOOK: APR

TE MANIA FOE F734VTMF734^{SV}SIRE: GRANITE RIDGE KAISER K26 SJJK26^{SV}

GRANITE RIDGE SUPREME F158 SJKF158#

MILLAH MURRAH EQUATOR D78 NMMD78^{PV}

DAM: WAKEFIELD FANCY PANTS J485 ANNJ485#

WAKEFIELD FANCY PANTS F851 ANNF851^{SV}TE MANIA CALAMUS C46 VTMC46^{SV}

TE MANIA DANDLOO D700 VTMD700#

NICHOLS QUIET LAD T9 USA15922661#

GRANITE RIDGE SUPREME D85 SJKD85#

BT EQUATOR 395M USA14237157#

MILLAH MURRAH RADO Y119 NMMY119#

L T 598 BANDO 9074 USA9074#

WAKEFIELD D502 ANND502#

Index	\$Value
Breeding	\$135
Domestic	\$118
Heavy Grain	\$143
Heavy Grass	\$131

July 2020 TransTasman Angus Cattle Evaluation

	CE Dir	CE Dtr	GL	BW	200	400	600	MCW	Milk	SS	CWT	EMA	RIB	Rump	RBV	IMF
EBV	+4.8	+4.9	-7.6	+4.7	+53	+97	+134	+131	+20	+2.1	+75	+5.7	+0.3	-0.3	+0.6	+1.2
Acc	56%	45%	84%	73%	63%	62%	63%	59%	53%	60%	55%	55%	57%	56%	53%	54%

Genetic Conditions: AMFU, CAFU, DDFU, NHFU

COMMENTS: P84 is a thick set young bull that has a good disposition. He is free moving with good depth of body. Don't overlook this young bull the last Angus bull for the day. Top 10% for gestation length, 600 day growth and NFI, top 20% for 200, 400 day growth, days to calving, carcass weight and Angus breeding index and heavy grass index.

PURCHASER _____

\$ _____

**Contact:**

Keith Moen

0477 000 737

keith@grainandtrade.com.au

www.grainandtrade.com.au

Grain, fodder and fertiliser

Sales and marketing

Personalised service

Competitive pricing

Freight and logistics made easy

Fully independent

Large and small tonnages

Contactable all hours

DISCLAIMER AND PRIVACY INFORMATION

IMPORTANT NOTICES FOR PURCHASERS



Animal details included in this catalogue, including but not limited to pedigree, DNA information, Estimated Breeding Values (EBVs) and Index values, are based on information provided by the breeder nor owner of the animal. Whilst all reasonable care has been taken to ensure that the information provided in this catalogue was correct at the time of publication, neither the vendor, Angus Australia or the selling agents assume any responsibility for the accuracy or completeness of the information, nor for the outcome (including consequential loss) of any action taken based on this information.

Parent Verification Suffixes

The animals listed within this catalogue including its pedigree, are displaying a Parent Verification Suffix which indicates the DNA parent verification status that has been conducted on the animal. The Parent Verification Suffixes that will appear at the end of each animal's name are as follows:

PV: both parents have been verified by DNA

SV: the sire has been verified by DNA

DV: the dam has been verified by DNA

#: DNA verification has not yet been conducted

E: DNA verification has identified that the sire and/or dam may possibly be incorrect, but this cannot be confirmed conclusively.

Privacy Information

In order for Angus Australia to process the transfer of a registered animal in this catalogue, the vendor will need to provide certain information to Angus Australia and the buyer consents to the collection and disclosure of that information by Angus Australia in certain circumstances. If the buyer does not wish for his or her information to be stored and disclosed by Angus Australia, the buyer must complete the form included below and forward it to Angus Australia. If the form is not completed, the buyer will be taken to have consented to the disclosure of such information.

BUYERS OPTION TO OPT OUT OF DISCLOSING PERSONAL INFORMATION TO ANGUS AUSTRALIA

If you do not complete this form, you will be taken to have consented to Angus Australia using your name, address and phone number for the purposes of effecting a change of registration of the animal(s) that you have purchased, maintaining its database and disclosing that information to its members on its website.

I, the buyer of animals with the following identifications.....

from member.....(name) do not consent to Angus Australia using my name, address and phone number for the purposes of effecting a change of registration of the animals I have mentioned above that I have purchased, maintaining its database and disclosing that information to its members on its website.

Name: Signature:

Date:

Please forward this completed consent form to Angus Australia, 86 Glen Innes Road, Armidale NSW 2350.

If you have any questions or queries regarding any of the above, please contact Angus Australia on (02) 6773 4600 or email office@angusaustralia.com.au



DIRECTIONS

Wakefield Road

(14km from Wollomombi
50km from Armidale)

To Grafton

(141km from Wakefield Rd turn off)
and to Dorrigo



Look for our sign
on the Highway.



4km to Wakefield Sale Barn

Ponds Creek Bridge

Wollomombi Station

Waterfall Way

Kempsey Road

Wollomombi

To Armidale

(50km from Wakefield Rd turn off)



“Wakefield”, Wollomombi, NSW

Approximately
55km east of Armidale
(Waterfall Way),
141km south west of Grafton,
& 35km west of Ebor.

**Look for our sign
on the Highway.**

BUYERS INSTRUCTIONS



Name: _____

Address: _____

Phone: _____ **Fax:** _____

Email: _____

Bid Card Number: _____

Lot No's Purchased: _____

_____ **Total Purchased:** _____

Destination PIC: _____

Destination Address: _____

Trucking Details: _____

Are you EU Accredited? YES NO

Do you require Insurance? YES NO

Do you require stud transfer of lots? YES NO

Stud Name: _____

Other Instructions: _____

Buyers Signature: _____ **Date:** _____

T.J. & J.L. Foley

Livestock, Wool & General Carriers

"Dallyn"

ARMIDALE NSW 2350

FOLEY'S

Fully insured

Telephone/Fax (02) 6772 3456

Mobiles 0428 659 072 / 0428 961 014

Email tjfoley@northnet.com.au

Transporting in New England since 1972



LOT 4
Wakefield Pharaoh
BIS P790E



LOT 15
Wakefield Masquerade
BIS M152E



LOT 5
Wakefield
Pseudo Echo
BIS P859E



LOT 7
Wakefield
Pride and Joy
BIS P834E

15TH ANNUAL CHAROLAIS & ANGUS BULL SALE
Friday 14th August 2020 at 1pm at "Wakefield", Wollomombi, NSW

Greg & Jenny Frizell "Wakefield" Wollomombi via Armidale
phone 02 6778 1346 mobile 0427 781 346 email wakefieldstud@bigpond.com

www.wakefieldcharolais.com.au